

Meeting PLANNERS GUIDE

Chicago
Southland
Convention & Visitors Bureau
Just Beyond the City Limits



Welcome to the Chicago Southland

We are delighted that you are planning a meeting in the Chicago Southland. This planning guide is designed to assist you with your meeting requirements and to provide you with the information you need to make your meeting a successful event.

The Chicago Southland is comprised of 62 south and southwest suburbs of Chicago, encompassing over 400 square miles of urban and open areas. The Chicago Southland is Chicago's most affordable region, offering names of hotels you know and trust. Accessibility to our region can be easily made through Midway or O'Hare Airports and several interstates transverse our region (including I-55, I-57, I-80, I-94, I-294 and I-355).

We are here to assist you with your planning and servicing needs, so please give us a call - it's toll free 1-888-895-8233.



2304 173rd Street
Lansing, IL 60438-6006
708-895-8200 FAX 708-895-8288
Toll Free 888-895-8233
E-Mail: meetings@visitchicagosouthland.com
WEB Site: www.visitchicagosouthland.com

The information provided in this brochure was compiled by the Chicago Southland Convention and Visitors Bureau based on information materials submitted directly from the organization or business entity.

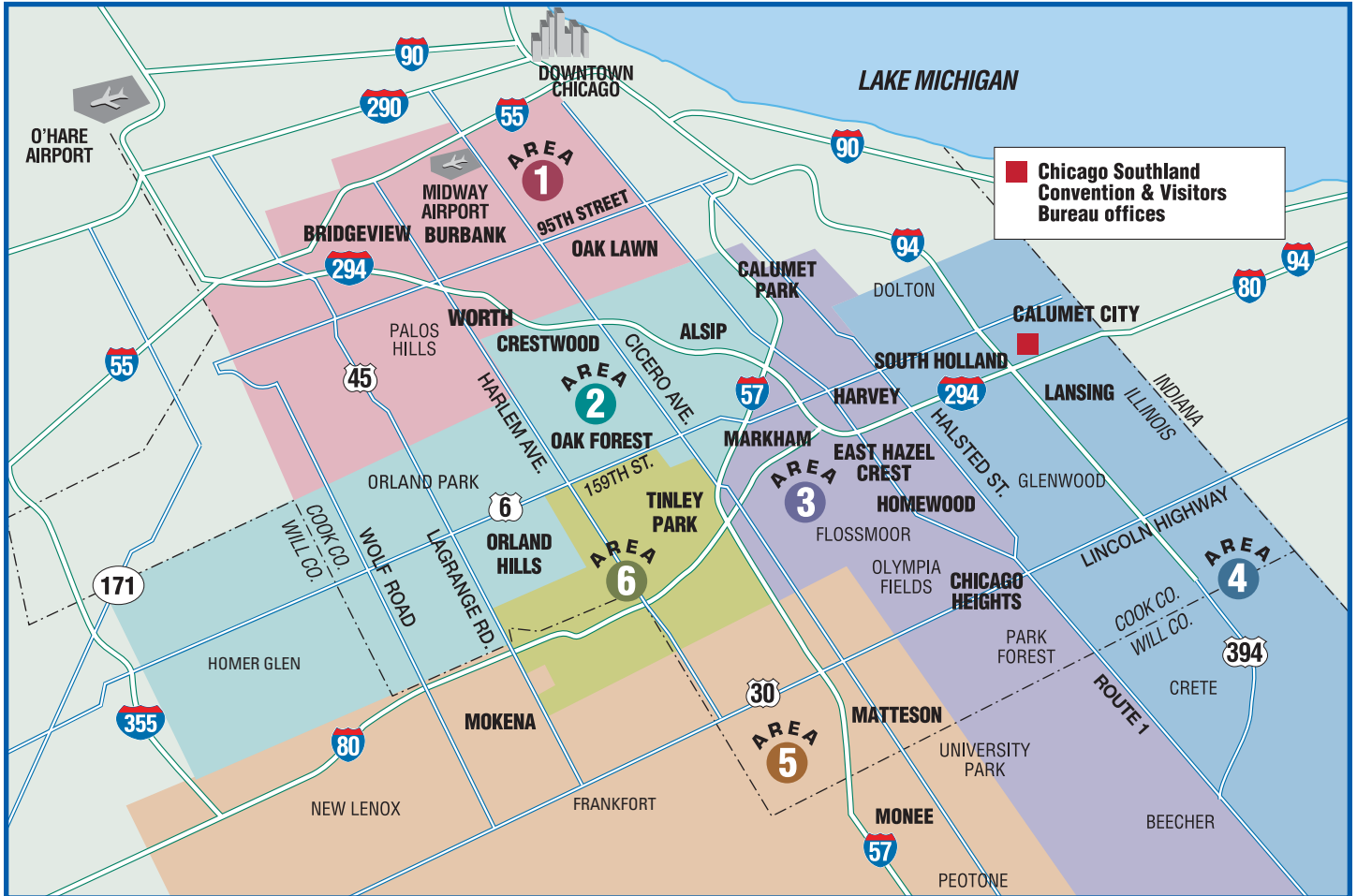
The Chicago Southland Convention and Visitors Bureau assumes no liability for the accuracy of the information or representations/delivery of services contained herein.



3/2010



Chicago Southland Map



Area 1 – Bridgeview, Burbank, Oak Lawn & Worth

Area 2 – Alsip, Crestwood, Oak Forest & Orland Hills

**Area 3 – Calumet Park, Chicago Heights, East Hazel Crest,
Harvey, Homewood & Markham**

Area 4 – Calumet City, Lansing & South Holland

Area 5 – Matteson, Mokena & Monee

Area 6 – Tinley Park

Chicago Southland

The Chicago Southland offers meeting and event planners an array of hotels and motels with all the support services needed to ensure the event's success. Only 25 minutes from Chicago and easily accessible via two airports and several interstates, the Southland is Chicago's most affordable region! In addition to hotel meeting facilities, the Chicago Southland is home to the Tinley Park Convention Center, soon to be expanded to 58,000 square feet of contiguous exhibit space with an attached 202-room full-service hotel. The expansion is expected to be completed in spring 2011.

Airports & Transportation

Conveniently accessible throughout the U.S. via Interstates 55, 57, 80, 94, 294 and 355, the Chicago Southland is an ideal meeting location. Minutes from downtown Chicago and Midway and O'Hare International Airports, the Chicago Southland offers meeting planners accessibility and affordability, plus a wide variety of traditional and alternative meeting sites, all with a full complement of services.

Recreation & Activities

Unique among the Chicago Southland's meeting sites

is Irons Oaks Environmental Learning Center, a corporate teambuilding facility combining outdoor exercises and facilitated sessions designed to build corporate unity. Combining teambuilding with meetings and golf at one of over 36 Southland courses is a frequent request of meeting planners.

Services & Amenities

The Chicago Southland Convention & Visitors Bureau assists meeting planners with bids, site selection and inspections. Free convention services include namebadges, table tent cards, welcome signage and more!

Facilities

70 Hotel/Motel Properties with over 6,000 sleeping rooms including 6 Full-Service hotel facilities
Unique Dining to accommodate your group

Accessibility

Easily accessible via Interstates 55, 57, 80, 94, 294 and 355
Served by Midway and O'Hare Airports with over 3,641 flights daily

Affordability

FREE Parking at all Chicago Southland hotels
Affordable hotel room rates

Location

25 minutes from downtown Chicago
Bordered by Midway Airport

Attractions

Antique Shopping Areas
Historic Shopping & Architecture
Comedy Clubs
Family Entertainment Centers
Horse Racing Tracks
Numerous Museums
36 Public and Semi-private Golf Courses
Performing Art Centers/Theatres
Shopping Malls

Just Beyond Chicago Southland

Chicago Skyline Cruises
Chicago's Largest Zoo
Riverboat Casinos



SouthtownStar



Fast Phone Facts

Chicago Southland Convention and Visitors Bureau
708-895-8200 Toll Free 888-895-8233

VISITOR INFORMATION

Illinois Hotel & Lodging Association 312-346-3135
Illinois Bureau of Tourism 800-2-CONNECT
Illinois Restaurant Association 312-787-4000

VISITOR INFORMATION CENTERS

Chicago Southland Visitor Information Center
Chicago Southland Lincoln Oasis
700 East Tri State Tollway
South Holland, IL 60473
708-596-8300
Days/Hours: Open 7 days a week

Prairie View North
I-57 Rest Area - Northbound
North of Peotone Exit
Monee, IL 60449
DAYS/HOURS: M-Su WINTER: 8:30AM-4:30PM
Closed Thanksgiving, Christmas & New Years
SUMMER: 8AM-6:30PM End of April-End of
October

AIRPORT TRANSPORTATION

A Absolute Dream Limousine, Inc. 708-229-9400
A-Bylak Limousine 708-425-7300
A Southside Limousine Service 708-633-7155
All American Limousine Service 815-806-0594
Allegiance Limousine 708-478-1600
Allegro Limousine Service, Inc. 708-895-9998
Ambercrombie Limousines Limited 815-469-1091
American Dream Limousine 708-301-2700
Avanti Limousine 708-645-6650
Carolyn's Classic Limousine Service, Inc.
708-335-2464

Coach USA – Chicago 773-890-2075
Coach USA Indiana 800-248-TRIP
Go Airport Express 773-843-2421
Kendon Transportation Systems 800-767-1925
708-388-4466

Lawn Limousine 708-597-2787
Manny's Limousine Service 708-785-1008
My Chauffeur Limousine 630-920-8888
Omega Airport Shuttle 773-483-6634
Regency Limousine 708-755-8800
Southtown Limousine 708-301-1787
Suburban Taxi and Limo 708-444-4450
Unique Limousine 708-339-3934
United Limousine Service 630-969-3865
800-331-9037
Visions Transportation 708-932-0568
White Knight Limo Service 708-798-0053

AMBULANCE SERVICE

AeroMedical Transport Specialists 800-548-2376
American Jets 800-225-3538
Advanced Air Ambulance 800-633-3590
Global Air Response 800-631-6565
U.S. Air Ambulance 800-633-5384

BUSES

Coach USA – Chicago 773-890-2075
Coach USA Indiana 800-248-TRIP
RTA Travel Information Center 708-836-7000

CAMPGROUNDS & RECREATIONAL VEHICLE PARKS

The Emerald Trails 708-672-8700
Enchanted Shores of Killarney 708-258-6040
Plum Creek Nature Center 708-946-2216
Illinois Campground Association Directory
866-895-2267
www.illinoisgocamping.com

CAR RENTAL

AAA Automobile 24 Hour Service 800-222-4357
Alamo Rent A Car 800-327-9633
Avis Rent A Car 800-331-1212
Budget Rent A Car 800-527-0700
Dollar Rent A Car 800-800-4000
Enterprise Rent A Car 800-325-8007
Hertz Corporation 800-654-3131
National Car Rental 800-227-7368
Thrifty Car Rental 800-367-2277

CHARTER BUSES

Chicago Charter Express 312-666-1000
888-33-BUSES
Coach USA/Chicago Trolley, Double Decker,
Keeshin Transportation Services
(in IL) 773-254-6400
(outside IL) 800-843-3247
Kendon Transportation Systems 800-767-1925
708-388-4466
Mid America Charter, Inc. 800-323-0312
My Chauffeur Limousine 630-920-8888
Free Enterprise System 800-323-5281
708-474-7474

CHILD CARE REFERRAL SERVICES

Action for Children 312-823-1100
American Childcare, Svc. 312-644-7300
Kiddie Corp 800-942-9947

EMERGENCY NUMBERS

Emergency Only (in most municipalities) 911
Federal Bureau of Investigation 708-349-0004
312-421-6700
National Poison Control Center 800-222-1222
State Highway Patrol 312-368-4636
State Police, Cook County 847-294-4400
State Police, Will County 815-726-6377

HANDICAPPED TRANSPORTATION

Handicapped Transportation Service
708-535-3833

HOSPITALS

Advocate Christ Medical Center, Oak Lawn
708-425-8000
Advocate South Suburban Hospital, Hazel Crest
708-799-8000
Ingalls Memorial Hospital, Harvey 708-333-2300
Little Company of Mary Hospital and Health
Care Centers, Evergreen Park 708-422-6200
Metrosouth Medical Center, Blue Island
708-597-2000
Palos Community Hospital, Palos Heights
708-923-4000
St. James Hospital & Health Center,
Chicago Heights 708-756-1000
St. James Hospital & Health Center, Olympia Fields
708-747-4000

PHARMACIES (24 HOUR)

CVS
Calumet City 708-832-2943
Walgreens
Calumet City 708-868-5669
Hickory Hills 708-599-5603
Lansing 708-895-7937
Midlothian 708-687-1604
New Lenox 815-485-2735
Oak Lawn 708-425-6960
Olympia Fields 708-747-0121
Orland Park 708-532-7781
Orland Park 708-460-2021

RAIL

Amtrak 800-USA-RAIL
RTA/Metra 312-836-7000

ROAD CONDITIONS 312-DOT-INFO

TAXI SERVICE

AA Hazelcrest Cab 708-335-8294
American Taxi Dispatch 708-424-7878
Chicago Ridge Cab 708-422-2222
Marlon's Cab & Transportation 708-514-4987
McNamara Cab Co. 708-499-5777
Metro Yellow 708-499-4222
Riverdale Taxi 708-841-0352
Sauk Trail Taxi 708-755-1290
Suburban Cab Co. 708-331-8887
Suburban Taxi and Limo 708-444-4450

TELEGRAMS

American Telegram 800-343-7363
Western Union 800-325-6000

WEATHER 708-976-1212

Chicago Southland Convention & Visitors Bureau
members are in bold.

Transportation



AIRPORTS

Midway Airport 773-838-0600

Airlines Serving Midway Airport

AirTran Airways	800-825-8538
American Airlines	800-433-7330
Continental Airlines	800-525-0280
Delta Airlines	800-221-1212
Frontier Airlines	800-432-1359
Northwest/KLM Airlines	800-225-2525
Southwest Airlines	800-435-9792

O'Hare International Airport 773-686-2200
800-832-6352

Airlines Serving O'Hare Airport (Domestic)

American Airlines	800-433-7300
American Eagle	800-433-7300
Continental Airlines	800-525-0280
Delta Airlines	800-221-1212
Jet Blue Airlines	800-538-2583
Northwest/KLM Airlines	800-225-2525
Spirit	800-772-7117
United Airlines	800-241-6522
USAirways	800-428-4322

LOCAL AIRPORT

(for charter, rental and private business jets)
Lansing Municipal Airport 708-895-8844

MILEAGE TO CHICAGO SOUTHLAND

The Chicago Southland is approximately 22 miles from the City of Chicago's downtown area.

The North

Minneapolis, MN	435
Milwaukee, WI	115
Montreal, Quebec	850
New York, NY	824

The East

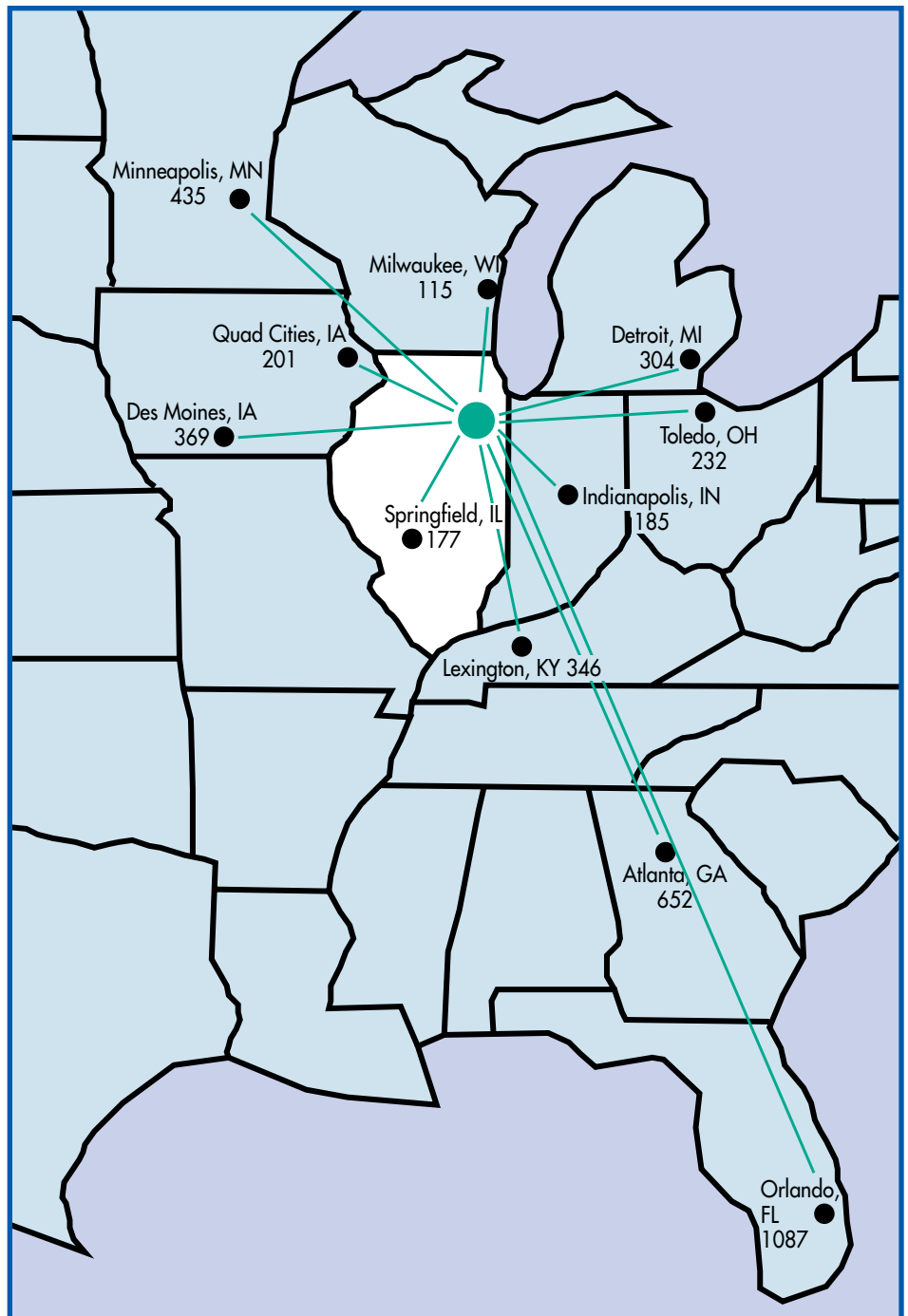
Baltimore, MD	690
Boston, MA	972
Detroit, MI	304
Indianapolis, IN	185
Norfolk, VA	831
Philadelphia, PA	760
Raleigh, NC	806
Toledo, OH	232
Washington, D.C.	693

The West

Boise, ID	1683
Dallas, TX	895
Denver, CO	974
Des Moines, IA	369
Los Angeles, CA	2074
Omaha, NE	481
Phoenix, AZ	1691
Portland, OR	2105
Quad Cities, IA	201
Salt Lake City, UT	1412
San Francisco, CA	2164
Seattle, WA	2035

The South

Atlanta, GA	652
Birmingham, AL	620
Lexington, KY	346
New Orleans, LA	890
Orlando, FL	1087
Springfield, IL	177
St. Louis, MO	264



AVERAGE FLIGHT TIMES TO CHICAGO SOUTHLAND

(Midway and O'Hare Airports)

Atlanta, GA	1 hour
Dallas, TX	2 hours 8 minutes
Denver, CO	2 hours
Los Angeles, CA	4 hours
Minneapolis, MN	1 hour 10 minutes
New Orleans, LA	2 hours 15 minutes
New York, NY	1 hour 30 minutes
Orlando, FL	2 hours 15 minutes
San Francisco, CA	4 hours 20 minutes
Washington, D.C.	1 hour 5 minutes

HIGHWAY NOMENCLATURE

I-55	Adlai E. Stevenson Expressway
I-57	Interstate 57
I-90W	John F. Kennedy Expressway
I-90E	Chicago Skyway
I-94	Dan Ryan Expressway
I-294	Tri-State Tollway
I-355	Veterans Memorial Tollway
I-394	Bishop Ford Freeway

CLIMATE

Month	Average Daily Temperature Max/Min
January	31/16
February	35/20
March	46/29
April	59/39
May	70/49
June	79/58
July	84/64
August	81/62
September	74/54
October	61/43
November	48/32
December	35/21

Event Services

The Chicago Southland Convention & Visitors Bureau can assist you in many ways, from site selection through on-site registration. We are your primary source of information for the Chicago Southland region. You can rely on the expertise of our professional staff to assist you in all facets of planning your next event. We offer a variety of FREE professional services: Name Badges, Welcome Banners and Tent Cards to just name a few. Call us today at 888-895-8233!

PRE-EVENT SERVICES

Pre-Event Services are available prior to your event in the Chicago Southland.

Brochure, Video and Slide Distribution

A variety of brochures, videos, slides and electronic files for individuals and groups are available upon request to event planners. These brochures contain information on hotels, attractions, cultural organizations, restaurants and activities in the Chicago Southland area.

Brochure Shells

Brochure shells (8-1/2" x 14", folds to 3-1/2" x 8-1/2") are available to planners for the promotion of your event. The brochure shell is a four-panel self-mailer printed in full color on a glossy paper stock. One side contains a Chicago Southland map, information and photos, along with room for your event's name, date and location. The other side is blank and can be used for additional information about your event.

Convention Suppliers

The Bureau has a list of members representing every facet of the hospitality industry including: audio/visual, transportation, decorators, florists, tour companies, specialty items, etc. Let us introduce you to the local suppliers who can help make your event a success.

Electronic Newsletter

The Bureau can send out an e-news blast to your participants. Information and e-mail addresses (in Excel format) need to be submitted at least two weeks prior to sending date.

Event Listing

If your event is open to the public, it can be listed in the Chicago Southland Festivals & Events Brochure (if deadline is met). It can also be listed on the Bureau's website, on our weekly calendar faxed to hotels and on our event hotline.

Familiarization Tours

Familiarization tours for planners are conducted to promote the Chicago Southland area.

Itinerary Planning

We can help plan your group's itinerary from start to finish. Services include: meal planning, cultural/recreational activities, ground transportation and step-on guides.

Language Services

The Bureau can put you in touch with the appropriate linguistic service resources.

Literature

We can provide you with complimentary copies of our printed materials.

- Visitors Guide
- Coupon Book
- Festivals & Events Guide

Media Kit

Upon request, we can provide you with a media mailing list, area background stories and electronic photos.

Microsite

Clients that book a minimum of 50 room nights will be eligible for a custom microsite. Each microsite will have its own url and contain information on hotels, attractions, events taking place during their

stay, restaurants, a link to the group's website and weather. There will be a group button on the Bureau's website homepage for each microsite. The Bureau requires a minimum of 60 days to accommodate this request.

Online Reservation Link

If your group requires two or more hotels/motels in the Chicago Southland area, the Bureau can provide a custom url for online reservations.

Pre-Promotion

Depending on previous event's location, the bureau can provide someone to attend and set up an area to help promote the Chicago Southland region as the future event site. Restrictions apply.

Press Releases

We can assist in the promotion of your event by sending out news releases or supplying you with our media list. The Bureau requires a minimum of 14 days to accommodate this request. Also, we can provide you with information on how to write a press release of your own.

Save The Date Postcards

Save the Date postcards are available to assist in the promotion of your upcoming Chicago Southland event. They are limited to groups with 100-500 people that have booked through the Bureau with a minimum of 50 room nights booked. These postcards are also available electronically.

Site Inspection

The Chicago Southland Convention & Visitors Bureau can provide you with a personal site inspection of hotels, convention center, expo centers, meeting/event facilities and attractions. Once your needs have been determined, we can set up a tour to showcase the facilities that can easily and efficiently accommodate your group.

Event Services

Tours

We can assist you in securing dynamic speakers and planning theme parties, spouse programs and tours for all ages.

Transportation

If you or your group needs transportation services, we will be happy to refer you to a local transportation company.

Unique Meeting Places

If it is an unconventional meeting place you are looking for, we have a list of facilities to accommodate your group. Such facilities include:

- Casinos
- Colleges/Universities
- Comedy Clubs
- Family Entertainment Centers
- Forest Preserves
- Golf Courses/Country Clubs

On-Site Services

On-Site Services are the services available during your event in the Chicago Southland.

Group Tour Goodie Bags

Goodie bags will be provided to motorcoach groups booked through the Chicago Southland Convention & Visitors Bureau that have at least 25 total room nights.

Literature

We will provide you with complimentary copies of our printed materials.

- Visitors Guide
- Coupon Book
- Festivals & Events Guide

Map Grid

The Bureau will customize a map of the Chicago Southland region by designating your event's hotels/facilities and provide a grid of area hotels and their amenities.

Meeting Planner Basket

A basket of Chicago Southland regional items can be presented

to the meeting planner. At least 50 room nights are required.

Name Badges

The Bureau can provide customized name badges with the Chicago Southland logo. The option of sticky or hanging name badges will be complimentary to all groups booked through the Chicago Southland Convention & Visitors Bureau. However, there must be a minimum of 50 room nights booked for the Bureau to print attendees' names on the badges. The Bureau requires a minimum of 14 days to accommodate this request. Names need to be submitted in an Excel format.

Official Greeting

We can arrange for a welcome letter and/or a welcome by a local dignitary. The Bureau requires a minimum of 30 days to accommodate this request.

Plastic Bags

The Bureau has available plastic bags (12" x 14") for registration packets or information distribution.

Profile Sheets

Customized profile sheets will be provided to your group upon request. These profile sheets provide important area information such as nearby pharmacies, grocery stores, dry cleaners, laundromats, etc. A profile sheet .pdf can also be provided.

Reduce, Recycle, Reuse

The Bureau can coordinate a donation drop off for your event (i.e. eyeglasses, canned food, ink cartridges, cell phones, clothes, etc.).

Registration Assistance

The Bureau can provide a registration list for groups. The Bureau also can provide registration assistance to all groups booked through the Chicago Southland

Convention & Visitors Bureau. This service is based on staff availability. The Bureau required a minimum of 100 rooms nights booked and 30 days advanced notice for this service. There will be a four-hour limit per 100 rooms booked.

Specialty Items

A specialty item can be provided to meetings/conventions with 100-500 attendees that have booked through the Chicago Southland Convention & Visitors Bureau with a minimum of 50 room nights.

Table Tent Cards

Customized table tent cards (8-1/2" x 11" single-fold) are available. The Bureau requires a minimum of 14 days to accommodate this request.

Transportation

If you or your group needs transportation services, we will be happy to refer you to a local transportation company.

Welcome Signage

The Bureau can provide you with a customized welcome banner (8' x 3') or signboard (2' x 3') for display at your event with the Chicago Southland Convention & Visitors Bureau logo. Clients can receive either ONE free banner or ONE free signboard if the group has booked a minimum of 50 total room nights. The Bureau requires a minimum of 14 days to accommodate this request.

POST EVENT SERVICES

Post Event Services are the services following your event in the Chicago Southland.

Post Event Questionnaire

The Bureau can provide a questionnaire template that can be given to your attendees for feedback. This service is available for groups booking a minimum of 50 room nights.



Hilton Oak Lawn Hotel & Conference Centre

Cicero Avenue at 94th Street
9333 South Cicero Avenue
Oak Lawn, IL 60453

Meeting Rooms: 20

Guest Rooms: 184

New Style – New Look

The New Hilton Oak Lawn

The Hilton® Oak Lawn is located 4 miles South of Chicago's Midway Airport in the heart of a city with numerous shops, dining choices and entertainment attractions. Whether you are attending a business meeting, held in one of our 18 meeting rooms or sharing one of your friends' or family's most special moments, you will find all the comforts of home with style and sophistication.

Accommodations

- 184 guestrooms and suites have been redesigned to enhance the business or leisure traveler's experience
- 32" flat screen HDTV, MP3 alarm clock
- Hilton HHonors® Floors and Executive Lounge with scenic views of Chicagoland
- Atrium enclosed indoor pool, whirlpool and fitness center featuring PRECOR® Fitness Equipment
- Parking is complimentary

Meeting Space

- 20,000 square feet of functional meeting and banquet space
- Grand Ballroom is 6,000 square feet and can be divided into 4 separate rooms
- 8 multi-functional rooms, all located on the main level
- The magnificent 4,000 sq. ft. Astoria Ballroom featuring a built-in bar and dance floor
- 2 new eco-friendly, luxury meeting rooms, the "Hilton® Executive Boardroom" and the "Hilton® Multi-purpose Room"
- Participating in the Stay Connected® Program with Hilton to include complimentary wireless high-speed Internet throughout the facility

Dining

- Whitney's Café - Our traditional and award-winning restaurant for "Best Service" and "Best Restaurant" in the Chicago Southland area, is the area's favorite for Breakfast, Lunch, Dinner and Sunday Brunch
- 95th St. Bar & Grill - The perfect place to relax and catch the latest sports score on our multiple flat screens. Look no further than the hotel's hottest addition with an intimate, sleek and sassy atmosphere
- Hilton Coffee Corner offers Starbucks® specialty coffee and drinks with bakery and sandwich selections
- In Room Dining Service, 24 hours a day, featuring all of Whitney's favorite items

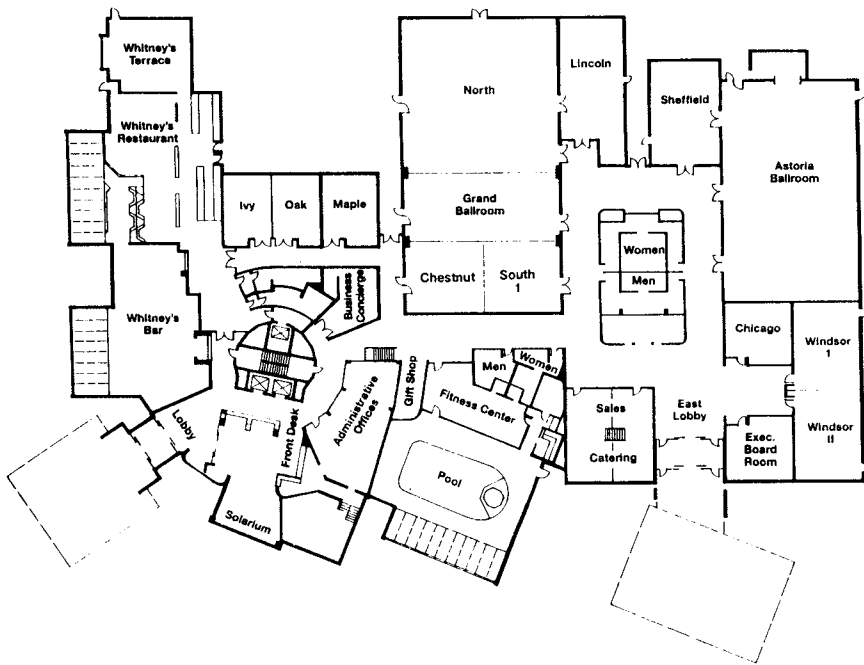
Airport and Transportation

Hilton Oak Lawn offers complimentary shuttle service to and from Midway Airport, the local Metra Station and Orange Line. We are also pleased to offer complimentary transportation to and from area businesses within a 5 mile radius of the hotel.



Meeting Facilities - Full Service

Area 1 - For area locations, refer to Chicago Southland map



ROOM	DIMENSIONS	SQ. FEET	BANQUET	CLASSROOM	THEATRE	RECEPTION	CEILING	10'x10'	8'x10'
Grand Ballroom	56'x107'	5,992	550	400	800	1,000	12'	n/a	46
North	56'x53'	2,968	250	200	350	500	12'	n/a	n/a
Center	56'x26'	1,456	120	100	140	250	12'	n/a	n/a
South	56'x26'	1,456	120	100	140	250	12'	n/a	n/a
South 1	28'x26'	728	63	50	70	120	12'	n/a	n/a
Chestnut	28'x26'	728	63	50	70	120	12'	n/a	n/a
Lincoln	23'x43'	989	80	70	100	125	10'	n/a	10
Astoria Ballroom	50'x80'	4,000	350	275	500	750	12'	n/a	30
Windsor	25'x65'	1,625	150	110	200	300	10'	n/a	20
Windsor I & II	25'x32.5'	812.5	75	50	85	150	10'	n/a	n/a
Sheffield	38'x25'	950	60	40	65	120	10'	n/a	n/a
Chicago	23'x24.5'	563.5	40	30	50	75	10'	n/a	n/a
Executive Board Room	23'x24.5'	563.5	40	30	50	75	10'	n/a	n/a
Ivy/Oak	27'x36'	972	60	60	80	100	10'	n/a	n/a
Maple	27'x20'	540	40	30	50	75	10'	n/a	n/a
Terrace	25'x23'	575	50	25	60	75	8'	n/a	n/a



Meeting Facilities - Full Service

Area 2 - For area locations, refer to Chicago Southland map

Georgios Banquets Comfort Inn & Conference Centre

Georgios Banquets Comfort Inn & Conference Centre

8800 West 159th Street
Orland Park, IL 60462

Meeting Rooms: 11

Guest Rooms: 160

Georgios Banquets, Comfort Inn and Conference Centre...a unique experience in luxury lodging and exquisite banquet dining. Rooms are available to suit the smallest board meetings to the grandest banquets, seating up to 1,200 people. The Comfort Inn lobby area is a two-story glass atrium featuring a spiral staircase and florals. The property features 160 newly renovated standard sleeping rooms, with 28 suites, 22,000 square feet of flexible banquet and meeting space. To compliment our hotel, guests enjoy the following features and amenities:



- Complimentary Deluxe Continental Breakfast
- Complimentary Coffee – 24 Hours a Day
- Complimentary Weekday Newspaper
- Free Local Calls – Within a 7 Mile Radius
- Indoor Heated Pool & Spa with Retractable Roof
- Fully Equipped Fitness Centre
- Arcade Room
- Oversized Work Desks
- In-Room Refrigerator and Microwave
- In-Room Coffee Makers
- Enterprise Rent-a-Car & Limo Service on Property
- Banquet and Conference Facilities – with High Speed Internet Available
- Fax and Copy Service Available – Charges May Apply
- In-Room Movies and Nintendo Games
- In-Room Hair Dryers
- In-Room Ironing Boards and Irons
- Handicap Facilities
- Elevators
- Safe Deposit Boxes and In Room Safes
- On Site Restaurant
- Business Centre
- Complimentary Pizza & Beer – Monday Evenings from 5:00 PM until 7:00 PM
- Free High Speed Internet Available in all Hotel Rooms

Georgios Banquets, Comfort Inn & Conference Centre is conveniently located to area businesses, golf courses, shopping, many restaurants and entertainment. Our facility encompasses approximately 22,000 square feet of flexible conference, meeting and banquet space. Eleven elegantly furnished multifunction rooms and a magnificent 14,000 square foot grand ballroom are perfectly suited for any business or social occasion up to 2,500 people.

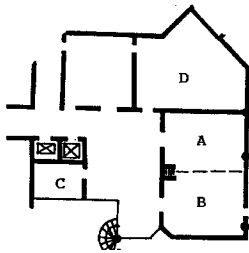
Our attentive staff, comfortable function space and great location make us the perfect choice for your next conference, meeting or banquet. You can depend on our experienced, expert catering and convention service staff to coordinate all details and ensure a successful event.

Meeting Facilities - Full Service

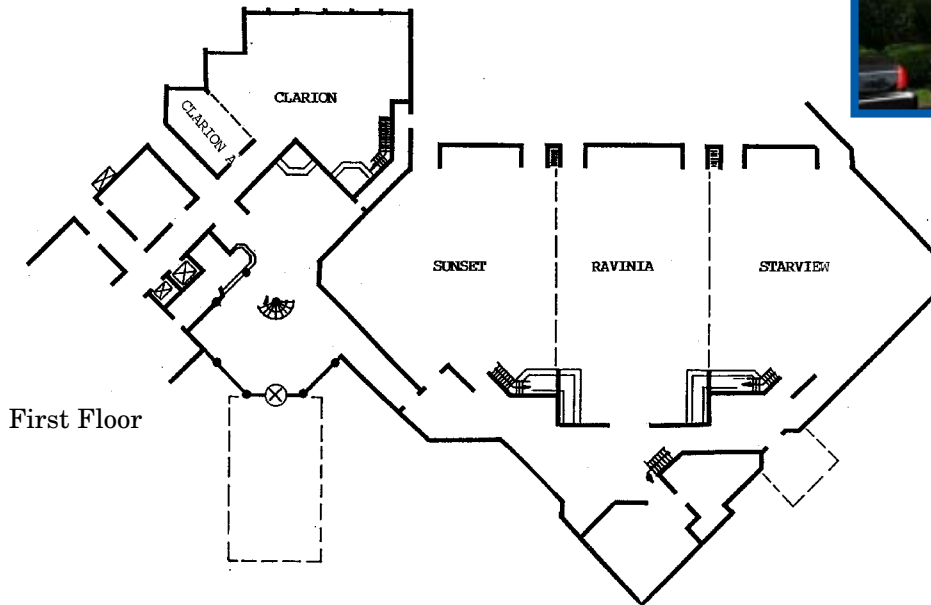
Area 2 - For area locations, refer to Chicago Southland map



**Georgios Banquets
Comfort Inn & Conference Centre**



Second Floor



First Floor

ROOM	DIMENSIONS	SQ. FEET	BANQUET	CLASSROOM	THEATRE	RECEPTION	CEILING	10'x10'	8'x10'
Sunset	70'x65'	4,550	400	200	650	400	18'	n/a	n/a
Ravinia	55'x80'	4,400	400	200	600	400	18'	n/a	n/a
Starview	70'x65'	4,550	400	200	650	400	18'	n/a	n/a
Sunset, Ravinia & Starview	195'x70'	13,500	1,200	n/a	1,900	1,200	18'	n/a	89
Clarion	55'x45'	2,475	225	110	250	225	18'	n/a	n/a
Clarion A	32'x18'	576	40	30	50	40	8'3"	n/a	n/a
A	21'x28'	588	50	32	60	50	8'3"	n/a	n/a
B	21'x28'	588	50	32	60	50	8'3"	n/a	n/a
A&B	42'x28'	1,176	100	72	100	100	8'3"	n/a	n/a
C	17'7"x10'	177	n/a	Conf: 10	n/a	n/a	8'3"	n/a	n/a
D	26'x38'	1,000	60	48	80	60	8'3"	n/a	n/a
Hospitality Room 222		177	n/a	Conf: 10	n/a	n/a	8'3"	n/a	n/a
Hospitality Room 226		177	n/a	Conf: 10	n/a	n/a	8'3"	n/a	n/a

Meeting Facilities - Full Service

Area 6 - For area locations, refer to Chicago Southland map



Tinley Park Convention Center
18451 Convention Center Drive
Tinley Park, IL 60477

Guest Rooms: 202
Meeting Rooms: 18



Tinley Park Convention Center is Expanding! Construction Has Begun.

This unique facility is nestled in the heart of Chicago Southland just 30 minutes south of Chicago; located at Interstate 80 and Harlem Avenue North, Exit 148B with easy access to interstates including I-57, I-294, I-90/94, I-394, I-55 and I-355. This Tinley Park Convention Center is only minutes to nearby shopping, one mile from the First Midwest Bank Amphitheatre, 20 minutes from Midway Airport and 40 minutes from O'Hare International Airport.

The Expanded Tinley Park Convention Center will Feature...

A total of 130,000 square feet ensuring Tinley Park's position as the largest and most modern Convention Center in the Chicago Southland...

- 58,000 square feet of net contiguous exhibition space and over 30,000 square feet of banquet and meeting space.
- Meeting space will include over 18 "breakout" rooms ranging in size from 750 square feet to 2,000 square feet.
- Fully equipped business center
- 30' high waterfalls in the lobby
- State-of-the-art high speed internet access and audio visual equipment.
- 1,500 FREE parking spaces on the Hotel and Convention Center grounds

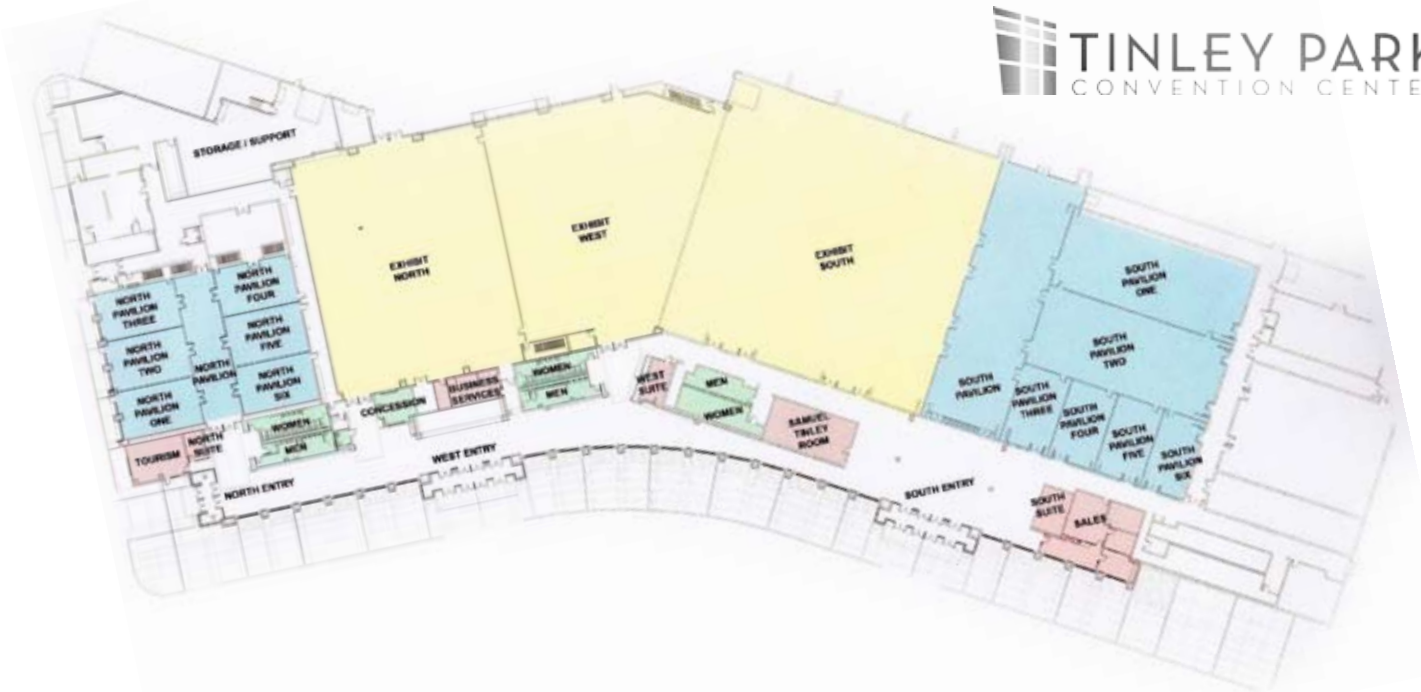
Here are just a few reasons to choose Tinley Park Convention Center for your next convention, trade or consumer show or social event!

- Attached Holiday Inn Headquarters Hotel with 202 deluxe guest rooms, luxurious whirlpool suites; All guest rooms are equipped with microwave, refrigerator, iron, ironing board, hair dryer, coffeemaker and wireless internet access
- Tinley Park Convention Center is the largest meeting venue in Chicago Southland.
- Outstanding dining in Bananas Grille & Bar (adjacent to hotel) serving breakfast, lunch and dinner
- 24-hour business center
- Close to championship golf courses
- Historic downtown Tinley Park nearby
- Downtown Chicago – 30 minutes
- Area attractions: First Midwest Bank Amphitheatre, Odyssey Fun World, Riverboat Casinos and Chicagoland Speedway

With a commitment of superior service to every visitor, combined with a convenient location and flexible exhibition space, this facility guarantees that your event will be a success. Whether you are planning your dream wedding, a small meeting, social function, convention, seminars or a large trade show, our attention to detail will make every aspect of your visit flow smoothly.

Meeting Facilities - Full Service

Area 6 - For area locations, refer to Chicago Southland map



ROOM	DIMENSIONS	SQ. FEET	BANQUET	CLASSROOM	THEATRE	RECEPTION	CEILING	10'x10'	8'x10'
Convention Center Meeting Rooms									
*Convention Center	132'x272'	35,900	2,700	2,250	3,900	5,700	35'	210	249
Convention Center	varies	58,100	4,200	3,800	6,000	8,700	35'	338	392
Exhibit North	95'x120'	11,400	720	800	1,000	1,400	35'	70	84
Exhibit West	varies x120'	10,800	690	750	900	1,250	35'	55	70
*Exhibit South	134'x132'	17,700	1,100	1,150	2,000	3,000	27'	109	120
*South Pavilion	120'x138'	16,560	1,400	1,100	1,900	2,700	14'	97	110
*South Pavilion One	40'x96'	3,800	290	280	405	700	14'	25	30
*South Pavilion Two	40'x96'	3,800	290	280	405	700	14'	25	30
*South Pavilion Three	24'x40'	960	60	64	100	125	14'	n/a	n/a
*South Pavilion Four	24'x40'	960	60	64	100	125	14'	n/a	n/a
*South Pavilion Five	24'x40'	960	60	64	100	125	14'	n/a	n/a
*South Pavilion Six	24'x40'	960	60	64	100	125	14'	n/a	n/a
*South Pavilion Ballroom	96'x120'	11,500	930	800	1,300	2,000	14'	63	67
North Pavilion	72'x90'	7,100	480	430	600	850	18'	50	60
North Pavilion One	24'x38'	900	60	54	63	80	18'	n/a	n/a
North Pavilion Two	26'x38'	1,000	60	54	63	80	18'	n/a	n/a
North Pavilion Three	25'x38'	950	60	54	63	80	18'	n/a	n/a
North Pavilion Four	24'x36'	860	60	54	63	80	18'	n/a	n/a
North Pavilion Five	26'x36'	900	60	54	63	80	18'	n/a	n/a
North Pavilion Six	24'x40'	960	60	54	63	80	18'	n/a	n/a
*Samuel Tinley	21'x42'	880	60	50	100	125	10'	n/a	n/a
South Meeting Rooms									
*South Meeting Room One	25'x28'	700	50	30	60	90	12'	n/a	n/a
*South Meeting Room Two	25'x28'	700	50	30	60	90	12'	n/a	n/a
*South Meeting Room Three	25'x28'	700	50	30	60	90	12'	n/a	n/a
*South Meeting Room Four	25'x28'	700	50	30	60	90	12'	n/a	n/a
South Meeting Room Five	25'x29'	740	60	36	72	95	12'	n/a	n/a
South Meeting Room Six	25'x31'	775	60	36	80	100	12'	n/a	n/a
South Meeting Room Seven	25'x29'	740	60	36	72	95	12'	n/a	n/a
South Meeting Room Eight	25'x22'	550	30	26	50	60	12'	n/a	n/a
*Executive Board Room	15'x21'	315	n/a	n/a	n/a	n/a	12'	n/a	n/a

* existing rooms prior to completion of expansion on Spring 2011



DOUBLETREE® HOTEL

CHICAGO/ALSIP

Doubletree Hotel Chicago/Alsip

5000 West 127th Street
Alsip, IL 60803

Meeting Rooms: 13

Guest Rooms: 193

The hotel is situated south of Chicago's Midway Airport. A short drive to downtown Chicago, Navy Pier, Museums, United Center, Art Institute, and shopping on the Magnificent Mile.

The hotel offers convenient access to all the metropolitan Chicago area via I-294 Tri-State Tollway or choose easy service through any of the Metra train stations nearby.



MEETING FACILITIES & SERVICES

15,000 Square feet of flexible meeting and banquet space. Thirteen meeting rooms, including the Grand Ballroom and The Woods, accommodating up to 600 guests. We offer a complete banquet and conference services staff and audio/visual team.

FACILITIES & SERVICES

193 GUEST ROOMS (5 suites). Non-smoking and handicapped accessible rooms available. ADA & FEMA approved facility. Complimentary local area shuttle service. Complimentary parking. State-of-the-art business center. Multi-lingual staff. Same-day valet dry cleaning & laundry. Gift shop.

ALL ROOMS & SUITES FEATURE

High-Speed Internet Access and remote guestroom printing. Bedroom with king or two double beds (featuring the Sweet Dreams by Doubletree bedding program). Two-line telephone with voicemail and data port. Coffeemaker with complimentary coffee and tea. USA TODAY delivered each weekday morning. 25" cable TV with pay-per-view movies and complimentary HBO. Iron and ironing board. Hairdryer. Individual climate control. Electronic door locks.

DINING & ENTERTAINMENT

In-Room Dining, Allgauer's Restaurant, Spotlight Lounge.

RECREATION

Heated indoor swimming pool. Fully-equipped fitness center. Golf course, putting green, tennis courts, hiking trail and horseback riding nearby.

SURROUNDING ATTRACTIONS

Westfield Shopping Town-Chicago Ridge, 5 miles. Midway Airport, 8 miles. Performing Arts Center, 8 miles. First Midwest Bank Amphitheater, 8 miles. Casino Boats, 10 miles. TOTOYA PARK, 5 miles. Soldier Field, 18 miles. Downtown Chicago, 20 miles. Brookfield Zoo, 20 miles. Chicagoland Speedway, 20 miles. Navy Pier, 20 miles. O'Hare Airport, 22 miles. Wrigley Field, 25 miles.

HILTON HHONORS

Hilton HHonors is the only hotel guest reward program that lets you earn both hotel points and airline miles for the same stay at more than 2,700 hotels worldwide. With the Hilton HHonors Event Planner program, Event Planners can earn Points & Miles for qualifying events. Ask your sales person for details.

Warm chocolate chip cookies await you at over 160 Doubletree locations in the USA, Canada and Latin America.

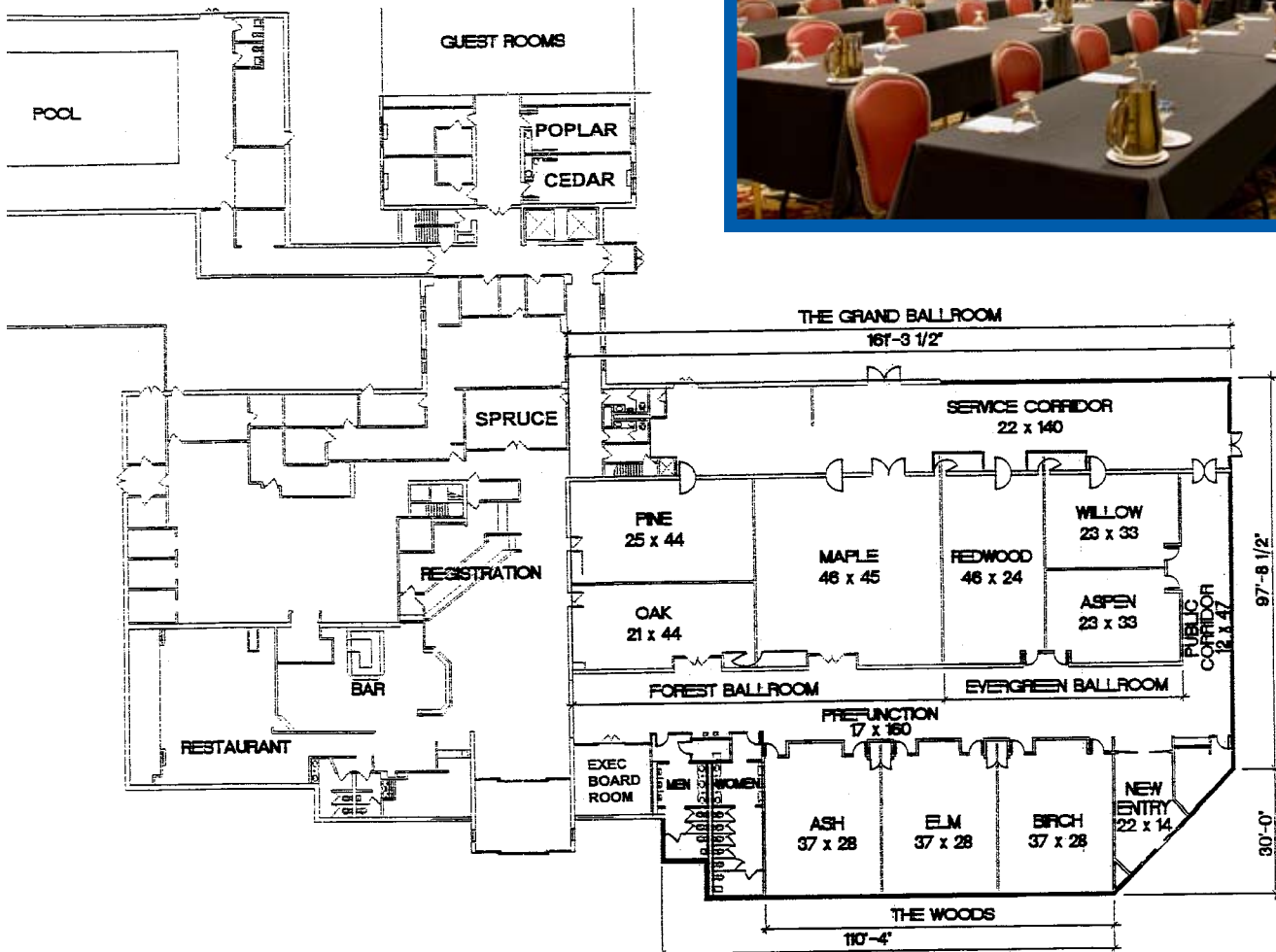
Meeting Facilities - Full Service

Area 2 - For area locations, refer to Chicago Southland map



DOUBLETREE® HOTEL

CHICAGO/ALSIP



ROOM	DIMENSIONS	SQ. FEET	BANQUET	CLASSROOM	THEATRE	RECEPTION	CEILING	10'x10'	8'x10'
Grand Ballroom	146'x46'	6,716	600	400	800	600	12'	44	44
Forest Ballroom	89'x46'	4,094	320	225	400	320	12'	28	28
Pine Room	44'x25'	1,100	60	32	50	60	12'	n/a	n/a
Oak Room	44'x21'	924	60	40	60	60	12'	n/a	n/a
Maple Room	45'x46'	2,070	150	125	180	150	12'	n/a	n/a
Evergreen Ballroom	57'x46'	2,622	180	170	300	180	12'	16	16
Willow Room	33'x24'	792	50	40	50	50	12'	n/a	n/a
Aspen Room	33'x22'	726	40	36	50	40	12'	n/a	n/a
Redwood	24'x46'	1,104	80	48	70	80	10'	n/a	n/a
The Woods Ballroom	84'x34'	2,856	240	144	260	215	10'	12	12
Ash Room	28'x34'	952	64	40	50	64	10'	n/a	n/a
Elm Room	28'x34'	952	64	40	50	64	10'	n/a	n/a
Birch Room	28'x34'	952	64	40	50	64	10'	n/a	n/a
Spruce Room	24'x14'	336	24	12	30	24	10'	n/a	n/a
Poplar Room	25'x12'	300	16	12	30	16	10'	n/a	n/a
Cedar Room	25'x12'	300	16	12	30	16	10'	n/a	n/a
Executive Boardroom	18'x14'	252	n/a	n/a	12	n/a	10'	n/a	n/a

Meeting Facilities - Full Service
Area 5 - For area locations, refer to Chicago Southland map



Holiday Inn Matteson Hotel and Conference Center

I-57 & Route 30
500 Holiday Plaza Drive
Matteson, IL 60443

Meeting Rooms: 9

Guest Rooms: 203

This Chicago Southland hotel features 203 professionally decorated Guest Rooms including Jacuzzi Suites. Our full service features include Fallingwater Restaurant, which is quietly set in a beautiful atrium, highlighted with cascading waterfalls. Executive

chef Gregory York's innovative creations include a variety of steaks, fresh seafood and unique pasta dishes. The Atrium Bar offers a relaxing environment where one can unwind to soft piano music, fine spirits and the crackling of a fireplace. Razz Ma Tazz Nightclub hosts Karaoke on Thursdays and live DJ on Saturdays.

15,000 square feet of flexible conference facilities. From groups of 10 to 1200, our professional Sales and Catering Team will assist you with all the details to ensure a successful program. Our superb culinary team has been the area's leader in catered events for all occasions.

The Southland's Premier Hotel for the past 22 years, serving all your meeting and banquet needs with style and flair.

Bring your business to the Chicago Southland and experience the professionalism of the Holiday Inn Chicago Matteson Hotel & Conference Center.

Additional Fantastic Amenities: Indoor heated Swimming Pool, Whirlpool, Sauna, Game Room, Little Tykes play area, two-story outdoor sun deck and state of the art fitness facility.

Guest Room Amenities: Voice Mail, Free High-Speed Wireless Internet Access, Data ports, Two phones, Work desk with lamp, In-Room Coffee Service, Hairdryer, Iron and Ironing Board, Free Morning Newspaper, 27" Color TV, In-room movies.

Restaurants and Shopping within walking distance.

Announcing our Executive Level 5th Floor with upgraded amenities and private Key card access: Continental Breakfast every Monday - Friday served in the Governors Suite. Evening Hors D'Ouerves Reception, Sunday - Thursday served in the Governors Suite. Upgraded amenities include gourmet coffee, plush linens and Bath & Body Works products.

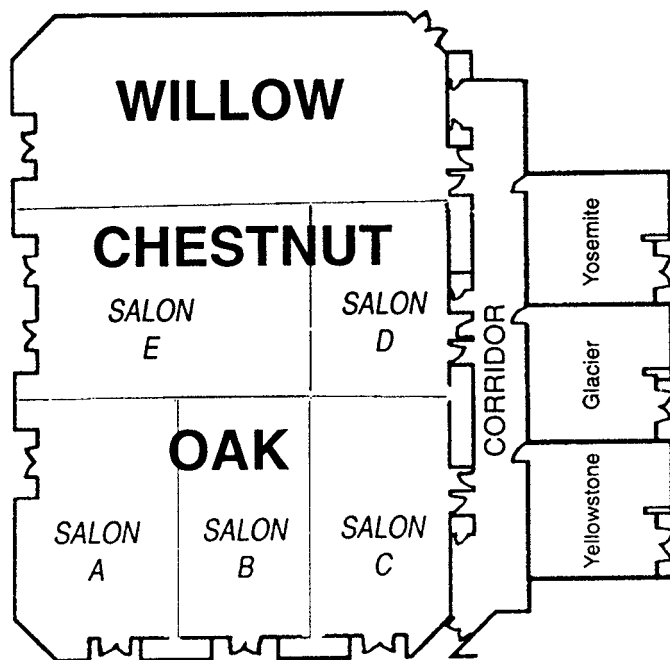


Meeting Facilities - Full Service

Area 5 - For area locations, refer to Chicago Southland map



SYCAMORE BALLROOM



ROOM	DIMENSIONS	SQ. FEET	BANQUET	CLASSROOM	THEATRE	RECEPTION	CEILING	10'x10'	8'x10'
Sycamore Ballroom	78'x117'	9,126	850	950	1,200	1,200	14'	50	60
Oak	44'x78'	3,432	250	240	400	400	14'	n/a	n/a
Chestnut	36'x78'	2,808	200	150	300	300	14'	n/a	n/a
Willow	36'x78'	2,808	200	150	300	300	14'	n/a	n/a
Salon A,B,C	26'x44'	1,144	70	60	100	100	14'	n/a	n/a
Salon D	26'x36'	936	60	60	90	100	14'	n/a	n/a
Salon E	52'x36'	1,872	110	110	100	125	14'	n/a	n/a
Atrium Cove	21'6"x33'	712.8	60	50	75	75	14'	n/a	n/a
Yellowstone	24'x24'	576	40	30	50	50	10'	n/a	n/a
Glacier	24'x24'	576	40	30	50	50	10'	n/a	n/a
Yosemite	24'x24'	576	40	30	50	50	10'	n/a	n/a
Boardroom	18'x24'	432	n/a	n/a	n/a	n/a	8'	n/a	n/a
Atrium Lounge		1,700	180	80	250	200	10'	n/a	n/a

Meeting Facilities - Expo Center

Area 2 - For area locations, refer to Chicago Southland map

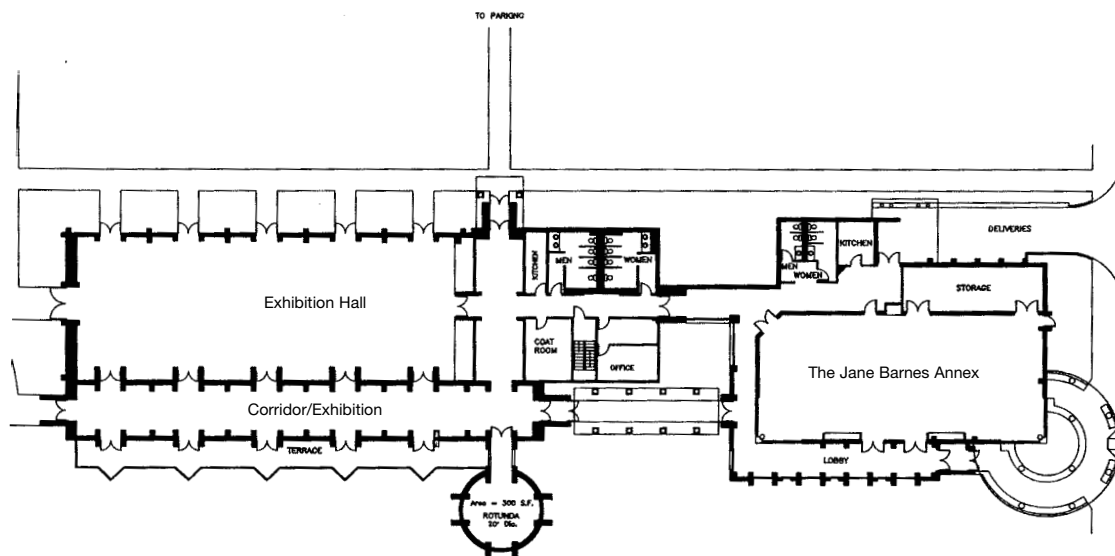
Orland Park CIVIC CENTER

Orland Park Civic Center

14750 South Ravinia Avenue
Orland Park, IL 60462

Meeting Rooms: 5

The Orland Park Civic Center is handicapped accessible and surrounded by ample parking. With more than 10,000 square feet of space, the Civic Center is ready to host your next sales conference, training seminar, reunion, sporting event, trade show, convention, theatrical, cultural, civic, educational or commercial activity. It is also the ideal setting for private events such as weddings, showers and christenings. Whether business or social, our staff is dedicated to making your event a success. We will be happy to provide suggestions for caterers, entertainers and other resources available to make sure that all the particulars for your event are satisfied. The Center offers flexibility, with connecting, interchangeable rooms to meet your specific needs. The Orland Park Civic Center wishes to make your occasion a happy and memorable event.



ROOM	DIMENSIONS	SQ. FEET	BANQUET	CLASSROOM	THEATRE	RECEPTION	CEILING
Exhibition Hall	37'x106'	3,885	250	200	450	450	9'
Grand Hall	13'x115'	2,400	n/a	n/a	n/a	50	20'
The Jane Barnes Annex	79'x35'	2,765	125	200	200	125	12'

Meeting Facilities - Limited Service

Area 1 - For area locations, refer to Chicago Southland map



Days Inn

9625 South 76th Avenue
Bridgeview, IL 60455

Meeting Rooms: 1

Guest Rooms: 110

Offering extended complimentary breakfast, in-room coffee maker, blow dryer, ironing board, and FREE local telephone calls. Other amenities

include: dataport, remote controlled cable television, fitness room, high speed wireless internet access and indoor corridors. Located 17 miles from downtown Chicago, 8 miles from Midway Airport. Located at 76th Avenue & 95th Street just off I-294.



ROOM	DIMENSIONS	SQ. FEET	BOARD ROOM	CEILING
Board Room	12' x 23'	276	10	9'

Meeting Facilities - Limited Service

Area 2 - For area locations, refer to Chicago Southland map



Baymont Inn - Alsip/Midway

12801 South Cicero Avenue
Alsip, IL 60803

Meeting Rooms: 2

Guest Rooms: 100

Indoor Corridor Property offering Extended Complimentary Breakfast, In Room Coffee Makers, Blow-dryer, Ironing Board, and Free Local Telephone Calls. Microwaves and refrigerators in all rooms. Other amenities include: Complimentary High Speed Internet, Free USA Today, Data Port, 33 Premium Cable Stations, Pay-Per-View, Cardiovascular Fitness Room, 24 Hour Business Center, Lobby ATM, Complimentary Midway Airport Shuttle, Amusements, Golf, Shopping and many Restaurants in Hotel area. Two Meeting Rooms and Free Parking. Ask about our Wyndham Rewards Program. Located 20 minutes from downtown Chicago, 8 miles from Midway Airport. Located on Cicero Avenue South off I-294.

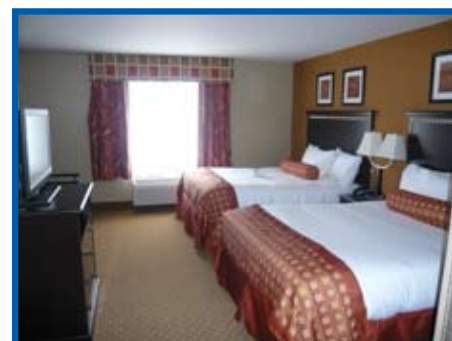


ROOM	DIMENSIONS	SQ. FEET	BANQUET	CLASSROOM	THEATRE	RECEPTION	CEILING
Boardroom	25'x12'	300	n/a	12	30	25/30	9'
Baymont Room	20'x16'	320	n/a	30	30	n/a	9'



Best Western Oak Forest

4375 Frontage Road
Oak Forest, IL 60452



Meeting Rooms: 1

Guest Rooms: 60

Welcome to the Best Western Oak Forest Hotel where customer service is top priority and accommodations are comfortable, warm and affordable. Meticulously remodeled in March 2009, this Illinois Best Western hotel offers convenient access to many local attractions, shopping and dining options in and around Oak Forest Illinois. Guests will enjoy beautifully appointed guest rooms featuring luxury bedding, 32-inch flat screen televisions with cable satellite television and free Wi-Fi high-speed Internet access. To help make life on the road even more comfortable, this Oak Forest hotel offers rooms complete with a microwave and refrigerator. Guests of the hotel are greeted every morning with a complimentary full hot breakfast buffet. And after a long day, guests are welcome to take a refreshing dip in the magnificent indoor swimming pool, relax in the spa or work out in the fully equipped fitness center. The personable and attentive staff at the Best Western Oak Forest Hotel is ready to ensure an enjoyable stay in Oak Forest, Illinois. Make a reservation today and save!

ROOM	SQ. FEET	BANQUET	CLASSROOM	THEATRE	RECEPTION	CEILING
Meeting Room	550	40	36	50	40	10'

Meeting Facilities - Limited Service

Area 2 - For area locations, refer to Chicago Southland map



Hampton Inn - Crestwood
 13330 South Cicero Avenue
 Crestwood, IL 60445

Meeting Rooms: 3

Guest Rooms: 123

The Hampton Inn Crestwood is conveniently 15 miles from Downtown Chicago, easy access from major interstates; I-294 (1) mile south, and I-57 (4) miles west.

River Crest Shopping Center is adjacent to the hotel which includes a variety of stores, restaurants and attractions; Kohl's & Target, Lone Star Steak House, Applebee's, Portillo's restaurant, Lowes Movie Theater, Hollywood

Miniature Golf, OTB & Casino Shuttle, nearby. We offer local shuttle to area businesses and to USA Coachline Airport Shuttle. Each guest will enjoy a restful night's sleep on our Pillow Top Mattresses with Cloud Nine sleep accessories with feather or foam pillows, Complimentary Hot Breakfast Buffet, Free High Speed Internet, Complimentary Business Center, Indoor Pool/Fitness and Free Parking. Book a meeting at the Hampton Inn Crestwood and receive Hilton Honor Meeting Planner Points with room upgrades when available & Meeting Room Incentives Packages.



ROOM	DIMENSIONS	SQ. FEET	BANQUET	CLASSROOM	THEATRE	RECEPTION	CEILING
A	20'x25'	500	30	24	40	30	9'
B	20'x25'	500	30	24	40	30	9'
A/B	20'x50'	1,000	70	48	80	70	9'
Conference Room	12'x20'	240	10	n/a	n/a	n/a	9'

Meeting Facilities - Limited Service

Area 3 - For area locations, refer to Chicago Southland map



Comfort Suites - Harvey

16920 Halsted Street
Harvey, IL 60426

Meeting Rooms: 1

Guest Rooms: 75

The Comfort Suites located off of Interstate 294 and Halsted is conveniently located only 25 minutes from downtown Chicago. Comfort Suites is also located

near several specialty restaurants and shopping centers. Comfort Suites Hotel offers 75 luxury suites. All suites include a microwave, refrigerator, coffee maker, hair dryer and sofa sleeper. Additional amenities include: Indoor Heated Pool, Fitness Center, Deluxe Continental Breakfast, HBO1 & HBO2 and free local calls. Presidential and Whirlpool Suites Available. Non-smoking and Handicap Suites Available. We specialize in accommodating Bus Tours, Family Reunions and Group Bookings. The Comfort Suites Hotel offers friendly, professional service and luxury accommodations without the high cost of a full service hotel.



ROOM	DIMENSIONS	SQ. FEET	BANQUET	CLASSROOM	THEATRE	RECEPTION	CEILING
Meeting Room	18'x20'	400	n/a	15	15	n/a	10'

Homewood Hotel

Homewood Hotel

17400 South Halsted Street
Homewood, IL 60430

Meeting Rooms: 10

Guest Rooms: 188

The Homewood Hotel provides the ultimate in luxury and service! Most conveniently located off I-80 & I-294, the Homewood Hotel provides easy access to downtown Chicago, McCormick Place and the Tri-State area. We feature a heated indoor swimming pool surrounded by a tropical ambiance, gift shop stocked with memorable trinkets, beauty salon & barber shop, ample Free Parking, transportation to/from O'Hare & Midway Airports \$20 via

limousine, Enterprise Rent A Car, fax machine, non-smoking rooms/handicap rooms, Executive Level with upgrades and banquet and meeting rooms to accommodate up to 900 people.



ROOM	DIMENSIONS	SQ. FEET	BANQUET	CLASSROOM	THEATRE	RECEPTION	CEILING
Triple Crown Ballroom	109'x76'	8,274	550	325	800	1,200	12'
Derby, Preakness or Belmont	37'x76'	2,812	180	140	250	350	12'
Derby 1 or Belmont 1	37'x35'	1,295	80	50	130	180	12'
Derby 2 or Belmont 2	37'x41'	1,517	100	60	160	220	12'
Preakness & Belmonts or Derbys	74'x76'	5,624	100	280	525	500	12'
Tack Room	19'x25'	475	20	25	25	40	8'
The Meadowlands	12'x19'	237	16	12	15	20	8'
The Lexington	12'x19'	237	16	12	15	20	8'
Mayor's Suite	25'x18'	490	n/a	n/a	n/a	50	8'
Homewood Suite	25'x18'	490	n/a	n/a	n/a	50	8'

Meeting Facilities - Limited Service

Area 3 - For area locations, refer to Chicago Southland map



Motel 6

12800 South Ashland Avenue
Calumet Park, IL 60827



Meeting Rooms: 3

Guest Rooms: 85

Experience the Motel 6, conveniently located on Interstate 57, the last lodging exit before downtown Chicago. We feature 85 clean, spacious rooms with coffee maker, iron and ironing board and a hairdryer. Additionally our deluxe whirlpool suites feature microwave and refrigerator. Our hotel is perfect for the business traveler. We offer continental breakfast served in our comfortable breakfast area, and indoor pool with hot tub and exercise room. In addition to the popular attractions of Chicago, the Motel 6 is within minutes of golf courses, casinos, shopping, restaurants and 15 minutes away from downtown.

ROOM	DIMENSIONS	SQ. FEET	BANQUET	THEATRE	CLASSROOM	RECEPTION	CEILING
Board Room	12'x19'	228	8	n/a	n/a	20	8.5'
Washington Room	14'x27'	357	35	35	20	40	8.5'
Ridge Room	30'x34'	837	60	100	40	80	8.5'

Meeting Facilities - Limited Service

Area 4 - For area locations, refer to Chicago Southland map



Clarion Inn - South Holland

610 Tollview Drive
South Holland, IL 60473

Meetings Rooms: 2
Guest Rooms: 80

The convenient freeway access off I-80/294 at Halsted Exit and only 20 minutes from downtown Chicago makes the CLARION INN OF SOUTH HOLLAND the ideal hotel choice for both business and leisure travelers. This hotel features Complimentary High Speed Internet, 24 Hour Business Center, Pavilion Pantry, Indoor Heated Pool & Spa, Fitness Center and a Restaurant on site. We provide full catering service and audio-visual equipment for all events. Our oversized guest rooms have refrigerators, microwaves, irons & ironing boards, coffee makers, hair dryers and feather bedding.



ROOM	DIMENSIONS	SQ. FEET	BANQUET	CLASSROOM	THEATRE	RECEPTION	CEILING
Milan Room	34'x27'	860	70	50	100	70	10'
Conference Room	17'x24'	408	n/a	20	35	n/a	n/a



Days Inn - Chicago South Lansing

17356 South Torrence Avenue
Lansing, IL 60438

Meeting Rooms: 5
Guest Rooms: 166

Our friendly and professional staff invites you to be our guest at the Days Inn - Chicago South Lansing. We are a full service hotel. We can accommodate meetings and banquets up to 80 people. Special bus tour rates available. The Days Inn - Chicago South Lansing is conveniently located at I-80/94 and Torrence Avenue exit north in Lansing, Illinois. It is easily accessible to downtown Chicago as well as Northwest Indiana. Days Inn - Chicago South Lansing is just minutes from River Oaks Shopping Center, the Indiana riverboat casinos, fine dining and theatres, golf course, tennis courts and other recreational and cultural facilities. Amenities include: First Choice Restaurant, room service, in house catering, electronic lock and key cards, outdoor heated pool, cable television, pay per view movies, non-smoking rooms, laundry facilities, fax/copier service and free car, bus and truck parking. Free freshly cooked hot breakfast, free high speed internet.



ROOM	DIMENSIONS	SQ. FEET	BANQUET	CLASSROOM	THEATRE	RECEPTION	CEILING
Holiday Ballroom	31'x36'	1,116	80	65	100	100	9'
Room 156	12'x18'	290	n/a	n/a	20	20	9'
Room 159	12'x18'	290	n/a	n/a	20	20	9'
Room 256	12'x18'	290	n/a	n/a	20	20	9'
Room 259	12'x18'	290	n/a	n/a	20	20	9'

Meeting Facilities - Limited Service

Area 4 - For area locations, refer to Chicago Southland map



Holiday Inn Express & Suites Chicago-South Lansing

2323 172nd Street
Lansing, IL 60438

Meetings Rooms: 1
Guest Rooms: 80

The Holiday Inn Express Chicago-South Lansing Hotel Is The Place To Meet! Our Chicago Southland hotel is great for holding meetings and gatherings. With a 1,000 square foot conference room equipped with an AV hook up and free high-speed Internet capabilities, it's perfect for any Lansing conference or event. Located on the Corporate Corridor, our new Chicago South Lansing Hotel is near some of the nation's top producing companies including BP Aamoco, Ford and Arcelor Mittal Steel and is also in close proximity to Chicago's main highways, including I-80, I-94 and I-294. Situated in suburban Chicago, our South Lansing hotel provides an ideal location for travelers of all kinds near several city attractions like the urban center of Chicago and Chicago's downtown city center. Our Lansing hotel is located in the region's most concentrated area of forest and recreational activities. Whether you want a night on the town or an afternoon in the park, our Lansing hotel is the perfect place for you. Families can enjoy the Holiday Inn Express Chicago-South Lansing Hotel's easy access to numerous Chicago attractions such as Soldier Field and the Magnificent Mile, by car or by Chicago's public transport system. Business travelers can appreciate the convenience of having the Chicago Southland Convention and Visitors Bureau within walking distance of our Chicago South Lansing Hotel.



ROOM	DIMENSIONS	SQ. FEET	BANQUET	CLASSROOM	THEATRE	RECEPTION	CEILING
Express Room	40'x25'	1000	60	50	70	60	8'



Sleep Inn Lansing

2255 West 173rd Street
Lansing, IL 60438

Meetings Rooms: 1
Guest Rooms: 69

Welcome to the Sleep Inn, conveniently located near a variety of popular area attractions including Riverboat Casino Gambling, the Tinley Park Convention Center and the First Midwest Bank Amphitheatre, host to internationally renowned musical and comedy acts. The hotel offers easy access to the Chicagoland area with Downtown Chicago, McCormick Place (America's premier convention facility) and Midway Airport within just 20 miles. A wide variety of specialty restaurants, theaters and shops are conveniently located nearby. For business travelers, the hotel provides modern conveniences like data ports, wireless high-speed Internet access and fax and copy services. Every room features a spacious shower stall, hair dryers, coffee makers, irons and ironing boards. Microwaves and refrigerators are available upon request. Handicap accessible and non-smoking rooms are also available. Be sure to check out the hotel's special corporate and group rates, as well as its motorcoach tour packages. The Sleep Inn in Lansing looks forward to serving you in the near future.



ROOM	DIMENSIONS	SQ. FEET	BANQUET	CLASSROOM	THEATRE	RECEPTION	CEILING
Meeting Room		567	35	30	45	35	13'

Meeting Facilities - Limited Service

Area 5 - For area locations, refer to Chicago Southland map



Americas Best Value Inn & Suites

5200 West Lincoln Highway
Matteson, IL 60443

Meeting Rooms: 2

Guest Rooms: 127

Quality Service, a Convenient Location and Affordable Prices make the Americas Best Value Inn a wise choice when planning your next function. We are located off I-57 East, Lincoln Highway (Route 30), just minutes from the Chicago Loop. The Americas Best Value Inn is close to businesses, indoor shopping mall and recreational facilities. Cracker Barrel and Olive Garden Restaurants are adjacent to the hotel, along with a wide variety of other restaurants nearby.

Amenities Include: Complimentary Continental Breakfast, Free Local Phone Calls, Free Movie Channel, In Room Coffee Makers, Irons & Ironing Boards, Indoor Heated Pool, Whirlpool and Fitness Center, Meeting Room Amenities Include: TV/VCR, Whiteboard, Wet Bar and Data Port Hookup in every guestroom.



ROOM	BOARD ROOM	CEILING
Conference Room #1	10	8'
Conference Room #2	10	8'



Country Inn & Suites

950 Lake Superior Drive
Matteson, IL 60443

Meeting Rooms: 1

Guest Rooms: 84

We have a variety of different rooms, Standard Queen, King Suites and Whirlpool suites. Other amenities include an indoor pool and exercise facility.



ROOM	DIMENSIONS	SQ. FEET	BANQUET	CLASSROOM	THEATRE	RECEPTION	CEILING
Meeting Room	25'x22'	550	57	24	40	60	14'
Breakfast Room	25'x38'	950	48	45	55	47	14'
Meeting & Breakfast Room	25'x60'	1,500	105	69	95	107	14'

Meeting Facilities - Limited Service

Area 5 - For area locations, refer to Chicago Southland map



Hampton Inn Chicago Southland – Matteson

20920 Matteson Avenue
Matteson, IL 60443



Meeting Rooms: 1

Guest Rooms: 91

Feel a little more at home as soon as you step into the lobby of the Hampton Inn & Suites Chicago Southland – Matteson. As you check-in and get settled, help yourself to a cup of coffee or tea from around-the-clock complimentary lobby service. In your room or suite, you'll notice conveniences and amenities sure to make you feel at home. You'll never look like you're living out of a suitcase when you stay at our hotel in Matteson. Keep your clothes looking fresh and crisp with your in-room iron and ironing board and start each day with a complimentary copy of USA Today and a cup of coffee brewed exactly the way you like it in your very own complimentary in-room coffeemaker. Your room is equipped with complimentary high-speed internet access to make it easy to e-mail photos of every landmark you visit during your stay in Chi-town. When the home office calls, handle tasks quickly in our 24-hour business center where you can print, copy, fax and e-mail from one convenient location. Even in Chicago, an evening in sounds like a good idea sometimes. No matter the weather, enjoy a swim in our indoor pool or work in time for an invigorating workout in our exercise room before heading up to your room to enjoy a movie on your 32" flat-panel TV that features a complimentary movie channel included with a premium variety of your favorite cable channels.

ROOM	SQ. FEET	BANQUET	CLASSROOM	THEATRE	RECEPTION	CEILING
Lincoln Room	1,000	40	50	50	50	10'



Super 8 - Monee

5825 West Monee-Manhattan Road
Monee, IL 60449



Meeting Rooms: 1

Guest Rooms: 45

The Super 8 Monee is located off I-57 exit 335 east on Monee-Manhattan Road. The Super 8 Motel-Monee offers 45 rooms including Jacuzzi suites, king singles and queen doubles, 24 hour front desk, remote control cable TV and meeting room.

ROOM	DIMENSIONS	SQ. FEET	BANQUET	CLASSROOM	THEATRE	RECEPTION	CEILING
Meeting Room	24'x26'	624	n/a	20	n/a	n/a	8'

Meeting Facilities - Limited Service

Area 6 - For area locations, refer to Chicago Southland map



Comfort Suites - Tinley Park

18400 Spring Creek Drive
Tinley Park, IL 60477

Meeting Rooms: 1

Guest Rooms: 66

All suite hotel offering Hot Breakfast Buffet, Free Wireless Internet, in-room Coffee, Micro/Fridge. Indoor pool and Fitness center. Meeting space with flat screen for power point - white board-VCR/DVD player - large white writing post-board. Free coffee/tea. Located within 5 miles of shopping, gaming, bus and train and only 20 miles from downtown Chicago. Exit 148B (Harlem North) off I-80.



ROOM	DIMENSIONS	SQ. FEET	BANQUET	CLASSROOM	THEATRE	RECEPTION	CEILING
Mezzo Room	20'x45'	900	n/a	20	40	40	9'



Fairfield Inn - Tinley Park

18511 North Creek Drive
Tinley Park, IL 60477

Meeting Rooms: 1

Guest Rooms: 64

The Fairfield Inn - Tinley Park offers affordable prices, superior service and upscale accommodations in a pleasant and professional atmosphere. Located at I-80 and Harlem Avenue, only 25 minutes away from the Chicago Loop. The Fairfield Inn offers a professional staff to satisfy your every need. Amenities include: indoor pool, jacuzzi and king rooms. Complimentary continental breakfast, Showtime movie channel and Tinley Park area phone calls. Non-smoking rooms.



ROOM	DIMENSIONS	SQ. FEET	BANQUET	CLASSROOM	THEATRE	RECEPTION	CEILING
Executive Conference Center	24'x36'	864	n/a	15	30	n/a	10'

Meeting Facilities - Limited Service

Area 6 - For area locations, refer to Chicago Southland map



Hilton Garden Inn Chicago/Tinley Park

18335 LaGrange Road

Tinley Park, IL 60487

Meeting Rooms: 3

Guest Rooms: 117

The Hilton Garden Inn Chicago/Tinley Park has everything right where you need it. Our hotel is nestled just north of interstate 80, minutes from shopping, banquet, and entertainment facilities. Experience the relaxing atmosphere and award-winning customer service that has placed us at the top of our brand. Hotel amenities include indoor pool, exercise room, wireless internet access, 24 hour business center and a pavilion pantry. We offer 1,725 sq. ft. of flexible meeting/banquet space. The Botanic Garden Room looks out to a spacious patio surrounded by green gardens. Spacious guest rooms all feature a refrigerator, microwave, coffee maker and large work desk. The Great American Grill is opened for breakfast, dinner and evening room service. 100% smoke free facility.



ROOM	SQ. FEET	BANQUET	CLASSROOM	THEATRE	RECEPTION	CEILING
Boardroom	375	n/a	n/a	n/a	n/a	10'
Botanic Garden I	630	40	45	60	40	10'
Botanic Garden II	720	50	54	70	50	10'
Botanic Garden I&II	1,350	90	90	130	90	10'



La Quinta Inn & Suites - Tinley Park

7255 West 183rd Street

Tinley Park, IL 60477

Meeting Rooms: 1

Guest Rooms: 100

For a moderate rate, a guest at La Quinta can experience excellent service and upscale accommodations in a pleasant and professional atmosphere.

La Quinta's Executive Conference Center provides a spacious, quiet, comfortable area for group meetings up to 8 people. La Quinta Inn & Suites - Tinley Park is conveniently located off I-80 (exit Harlem Avenue north from I-80) near business parks and shopping centers. Best of all, it's only a 30-minute drive to downtown Chicago. Amenities include: 100 guest rooms, business first rooms, indoor swimming pool and whirlpool, free continental breakfast, in-room coffee makers, free satellite movies, Showtime, news and sports, in-room hairdryers, irons and ironing boards, free local phone calls, data ports, fitness center, special rooms for non-smokers and leisure suites available.



ROOM	DIMENSIONS	SQ. FEET	BANQUET	CLASSROOM	THEATRE	RECEPTION	CEILING
Executive Conference Center	13'x18'	234	n/a	8	8	n/a	8'

Meeting Facilities - Limited Service

Area 6 - For area locations, refer to Chicago Southland map



Wingate by Wyndham

18421 North Creek Drive
Tinley Park, IL 60477



Meeting Rooms: 2

Guest Rooms: 86

At Wingate by Wyndham, we know you mean business. That's why we are dedicated to making your stay with us as comfortable and productive as possible. We are proud to offer a host of valuable amenities at no extra cost to you. Our all-inclusive pricing model gives you access to services and benefits you won't find at other mid-market hotel chains. At Wingate by Wyndham - Tinley Park, IL, we'll have you working hard and resting easy. From check-in to check-out, we've got it covered.

Each of our beautiful rooms is equipped with high speed wireless, 37" flat screen televisions, microwave, refrigerator, coffee maker, hair dryer, iron & ironing board, safe, overstuffed chair & ottoman and a luxurious bed featuring top of line mattress and linen. The hotel also offers a relaxing indoor pool & spa. For your convenience, a well equipped fitness center and business center are also available. Our courteous and professional staff welcome the opportunity to serve you during your next meeting or event in our area.

ROOM	SQ. FEET	BANQUET	CLASSROOM	THEATRE	RECEPTION	CEILING
Executive Meeting Room	650	50	45	50	50	9'
Executive Board Room	200	n/a	10	10	n/a	9'

Meeting Facilities - Colleges/Universities

Area 1 - For area locations, refer to Chicago Southland map



Moraine Valley

Community College

9000 West College Parkway
Palos Hills, IL 60465-2478



Meeting Rooms: 9

Moraine Valley Community College offers a variety of facilities for business meetings, conferences, workshops, and seminars. The Moraine Business and Conference Center can accommodate from 75 to 800 people with flexible seating configurations. We offer catering with a wide range of menu options and affordable prices. The Gymnasium, classrooms and theaters also can be rented.

ROOM	SQ. FEET	BANQUET	CLASSROOM	THEATRE	RECEPTION
Moraine Rooms (1, 2 and 3 combined)	9,444	600	300	800	662
Moraine Rooms (1, 2 and 3 each)	3,148	200	100	265	331
Moraine Plaza (pre-function area)	3,477	n/a	n/a	n/a	365
Gymnasium (Cyclone Center)	19,000	500	2,000	n/a	n/a
Menker Theater	4,388	n/a	n/a	600	n/a
Oremus Theater	2,685	n/a	n/a	150	150
Fogelson Theater	3,000	n/a	n/a	100	n/a
Fogelson Foyer	748	56	n/a	n/a	78
Room D116	1,064	n/a	48	n/a	112

Area 2 - For area locations, refer to Chicago Southland map



Trinity Christian College

6601 West College Drive
Palos Heights, IL 60463



Trinity Christian College offers a picturesque setting on our beautifully wooded 60-acre campus with personal attention to large and small groups. Trinity welcomes meetings, banquets, and receptions all year long and conference, family reunions, and camps during the summer. The Ozinga Chapel can accommodate banquets, receptions, concerts, and graduation ceremonies.

ROOM	BANQUET	CLASSROOM	THEATRE	RECEPTION
Board Room	32	32	n/a	n/a
Fireside Room	52	10-52	n/a	n/a
Porch	20	20	n/a	n/a
Classrooms	n/a	15-90	n/a	n/a
Dining Hall	300	n/a	n/a	300
Mary Kallemeyn Theatre	n/a	n/a	150	n/a
Mitchell Memorial Gymnasium	600	1200	n/a	n/a
Ozinga Chapel - Grand Lobby	184	200	n/a	184
Ozinga Chapel - auditorium	n/a	1200	1200	n/a

Meeting Facilities - Colleges/Universities

Area 3 - For area locations, refer to Chicago Southland map

Prairie State College

Prairie State College Business and Community Education Center

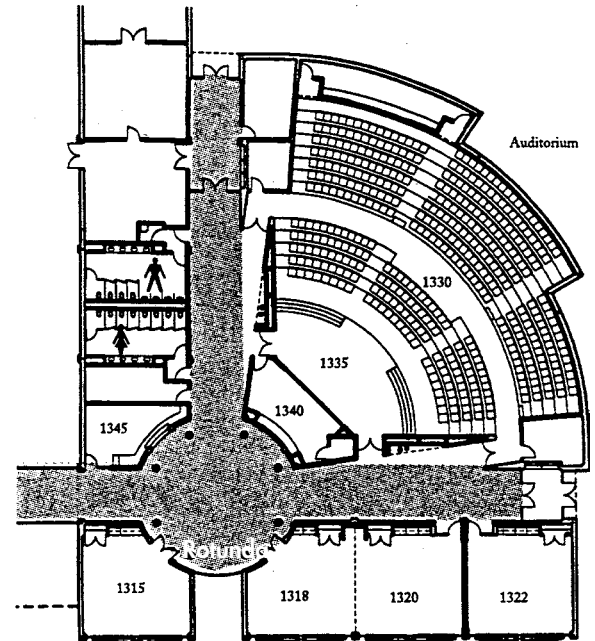
202 South Halsted Street
Chicago Heights, IL 60411

Meeting Rooms: 4

Designed to serve the need for affordable meeting space throughout Chicago Southland, the Business and Community Education Center is a business oriented, collegiate conference center, equipped with modern, well-appointed meeting rooms, a 486 seat auditorium, state of the art audio visual equipment, full-service catering and WIFI.

Rental fees include the use of TV/DVD, overhead projector, microphones, flipcharts, slide projector and screen.

Another highlight of the BCEC is the Christopher Art Gallery, sponsored by the PSC Foundation. This intimate exhibition space has been the site of several shows by both student and professional artists. It's also a perfect place for receptions and other gatherings.



ROOM	DIMENSIONS	SQ. FEET	BANQUET	CLASSROOM	THEATRE	RECEPTION	CEILING
Auditorium	n/a	n/a	n/a	n/a	486	n/a	n/a
Room 1315	25'x26'	650	30	30	40	50	10'
Room 1318	25'x26'	650	30	30	40	50	10'
Room 1320	26'x26'	675	40	30	50	60	10'
Room 1322	26'x26'	675	40	32	50	60	10'
Heritage Community Bank Room (1318 & 1320)	52'x26'	1,352	80	60	100	100	10'

Classrooms can be rented.

Meeting Facilities - Colleges/Universities

Area 5 - For area locations, refer to Chicago Southland map



Governors State University

Governors Highway &
University Parkway
University Park, IL 60466

Meeting Rooms: 9

Governors State University offers state-of-the-art facilities including Center for Performing Arts, a 1200-seat theatre suitable for meetings, presentations and special functions and the Center of Performing Arts Arena suitable for theme parties, receptions, meetings and presentations. Classrooms can be rented.



ROOM	DIMENSIONS	SQ. FEET	BANQUET	CLASSROOM	THEATRE	RECEPTION	CEILING
Engbretson Hall	54'x40'	2,227.5	60	60	120	60	20'
Hall of Governors	88'x56'	9,114.7	150	n/a	150	200	30'
Hall of Honors	32'x48'	2,291.6	90	80	130	150	10'
E Lounge	46'x30'	1,924.1	80	80	80	100	20'
F1622 Lecture Hall	42'x46'	1,349.4	n/a	125	125	n/a	20'
F Lounges	44'x32'	2,085.9	36	40	40	50	20'
Music Recital Hall	58'x58'	2,945.1	n/a	207-217	217	n/a	20'
Center for Performing Arts	85'x100'	29,000	n/a	n/a	1,180	n/a	50'
Center for Performing Arts Arena	90'x60'	5,280	150	n/a	n/a	200	24'

*Center for Performing Arts is 85'x100', Stage is 120'x46' and Balcony is 85'x45' and can seat 400. Classrooms can be rented.

Outside the Chicago Southland (just outside of area 1) - For area locations, refer to Chicago Southland map

SAINT XAVIER UNIVERSITY

Saint Xavier University

3700 West 103rd Street
Chicago, IL 60655

Saint Xavier University offers a vibrant university atmosphere at both its Chicago and Orland Park Campuses. Our campuses offer beautiful banquet and meeting facilities which vary in size to meet your needs. Saint Xavier University is host to many camps and conferences with a full service conference department to assist with event planning. Come tour our facilities to see what Saint Xavier University has to offer! We look forward to meeting with you.



ROOM	SQ. FEET	BANQUET	CLASSROOM	THEATRE
Alumni Room	1,218	38	38	38
Andrew Conference Center	8,000	n/a	200	120
Board Room	2,886	80	n/a	100
Shannon Center	85,000	n/a	n/a	3,500
Main Reception Room	3,744	160	n/a	200
McGuire Hall (theatre)	450 stage	n/a	n/a	240

Classrooms can be rented.

Meeting Facilities - Team Building Course

Area 3 - For area locations, refer to Chicago Southland map



Irons Oaks

20000 Western Avenue
Olympia Fields, IL 60461

Meeting Rooms: 2

Consider Irons Oaks for your next retreat or special function. Irons Oaks facilities offer an ideal setting for baby showers, religious ceremonies, anniversaries, birthday parties or an office meeting; come see our beautiful, all new 1300 sq. ft conference rooms. These rooms offer spacious accommodations for your special event along with a secluded, cozy, gracious atmosphere hosted by Irons Oaks' friendly staff. A sure delight!

Irons Oaks Environmental Learning Center provides the ultimate in experiential training programs coupled with a fun, safe environment that will take your business professionals to the next level of achievement.

Does your team need direction? At Irons Oaks, our Corporate Reach programs are customized to fit your corporation's specific needs. Corporate Reach training enhances professional skills with collaboration, communication, problem solving, and accountability, introduces tools for enhancing interaction, and provides guidance for action plan development to integrate team principles into daily operations, and much more! Our clients take back to their offices greater understanding and appreciation of individual skills and contributions and how their efforts impact group effectiveness. These skills provide the tools for groups and individuals to return to their organizations and create measurable improvements.

We offer experienced, top notched trainers who specialize in workshop facilitation, one-on-one consultations, off-site adventures and more. There is so much that we offer here at Irons Oaks. Your office staff will never be the same! While some of the training is physical in nature, everyone has the power to decide at what level he or she wishes to participate.

Irons Oaks is located on a 37-acre wooded preserve just south of the Chicago metropolitan area, conveniently located off I-57 at the corner of Vollmer Road and Western Avenue in Olympia Fields, Illinois. Additional grounds and facilities available for larger engagements.



ROOM	DIMENSIONS	SQ. FEET	BANQUET	CLASSROOM	THEATRE	RECEPTION	CEILING
Conference Room	42'x27'	1,300	60	75-100	60	100	8.5'



2304 173rd Street
Lansing, IL 60438-6006
708-895-8200 FAX 708-895-8288
Toll Free 888-895-8233
E-Mail: meetings@visitchicagosouthland.com
WEB Site: www.visitchicagosouthland.com



3/2010



ILLINOIS. MILE AFTER MAGNIFICENT MILE.