

Chicago Southland

✿ MEETING Planners GUIDE ✿



Credit: Kate Nelson



Credit: Charles Cherney Photography

Chicago
Southland
Convention & Visitors Bureau
Just Beyond the City Limits

enjoy
illinois

WELCOME TO THE Chicago Southland

We are delighted that you are planning a meeting in the Chicago Southland. This planning guide is designed to assist you with your meeting requirements and provide you with the information you need to make your meeting a successful event.

The Chicago Southland is comprised of 62 south and southwest suburbs of Chicago, encompassing over 400 square miles of urban and open areas. The Chicago Southland is Chicago's most affordable region, offering name brand hotels you know and trust. Accessibility to our region can be easily made through Midway or O'Hare Airports and several interstates transverse our region (including I-55, I-57, I-80, I-94, I-294 and I-355). In fact, the Chicago Southland is within a five-hour drive of eight states.

We are here to assist you with your planning and servicing needs, so please give us a call - it's toll free 1-888-895-8233.

19900 Governors Drive, Suite 200
Olympia Fields, IL 60461
708-895-8200 FAX 708-895-8288
Toll Free 888-895-8233
Meetings@MeetChicagoSouthland.com
MeetChicagoSouthland.com



9/2021

The information provided in this brochure was compiled by the Chicago Southland Convention and Visitors Bureau based on information materials submitted directly from the organization or business entity. The Chicago Southland Convention and Visitors Bureau assumes no liability for the accuracy of the information or representations/delivery of services contained herein.



Credit: Lizzy Coghill



Credit: Kate Nelson

enjoy
illinois

Chicago Southland Map

area 1

BRIDGEVIEW & BURBANK

area 2

ALSIP, CRESTWOOD,
OAK FOREST, ORLAND HILLS
& ORLAND PARK

area 3

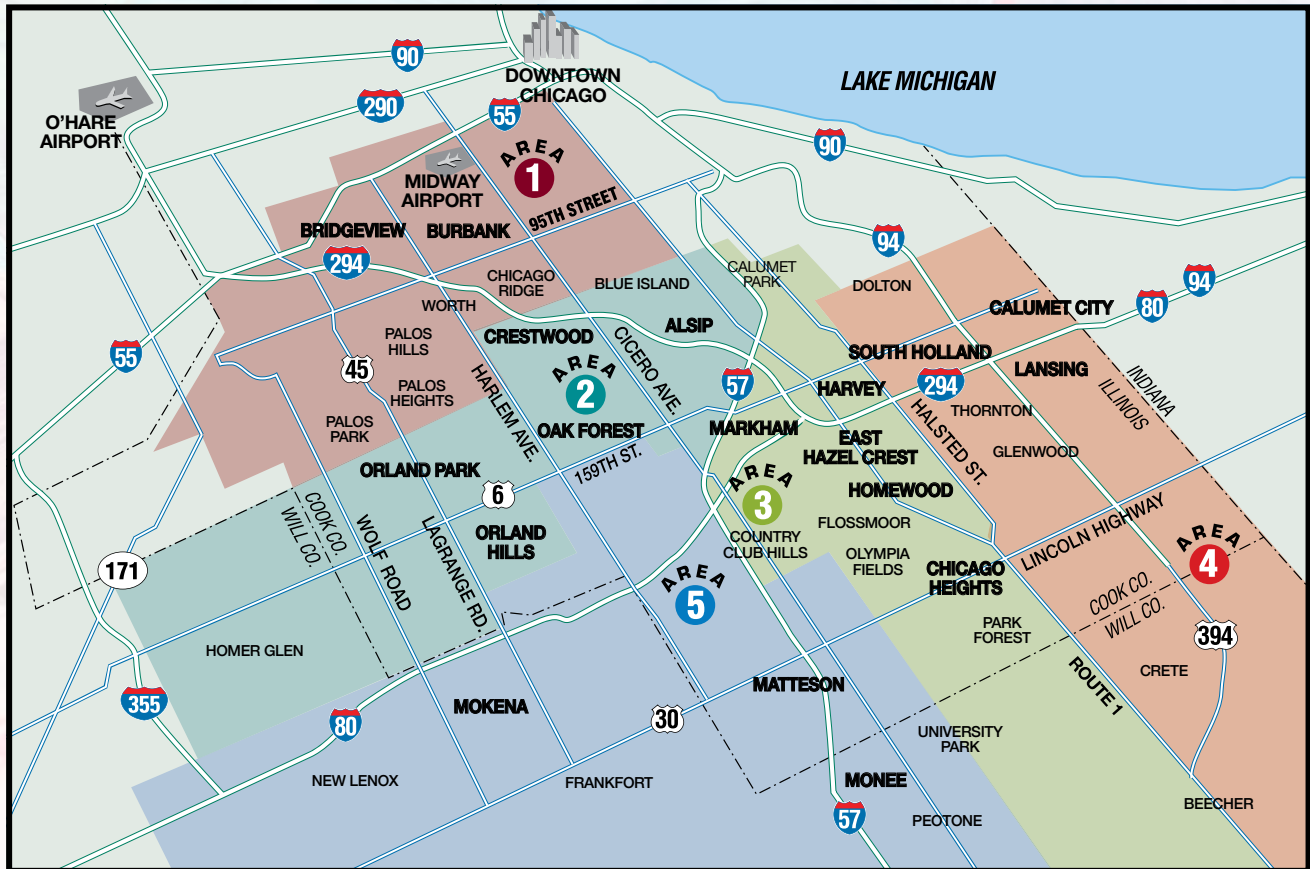
CHICAGO HEIGHTS,
EAST HAZEL CREST, HARVEY,
HOMewood & MARKHAM

area 4

CALUMET CITY, LANSING &
SOUTH HOLLAND

area 5

MATTESON, MOKENA & MONEE



Chicago Southland

The Chicago Southland offers meeting and event planners an array of full and select service hotels and motels with all the support services needed to ensure the event's success. Only 25 minutes from Chicago and easily accessible via two airports and several interstates, the Chicago Southland is Chicago's most affordable region! In addition to hotel meeting facilities, the Chicago Southland is home to colleges/universities, expo centers and an array of distinctive venues that combine meeting space with unique activities.

AIRPORTS & TRANSPORTATION

Conveniently accessible throughout the U.S. via Interstates 55, 57, 80, 94, 294 and 355, the Chicago Southland is an ideal meeting location. In fact, the Chicago Southland is within a 5-hour drive of eight states. Minutes from downtown Chicago and Midway and O'Hare International Airports, the Chicago Southland offers meeting planners accessibility and affordability, plus a wide variety of traditional and alternative meeting sites, all with a full complement of services.

RECREATION & ACTIVITIES

Unique among the Chicago Southland's meeting sites is Irons Oaks Environmental Learning Center, a corporate teambuilding facility combining outdoor exercises and facilitated sessions designed to build corporate unity. Connecting teambuilding with meetings and golf at one of over 34 Southland courses is a frequent request of meeting planners.

SERVICES & AMENITIES

The Chicago Southland Convention & Visitors Bureau assists meeting planners with bids, site selection and inspections. Free convention services include namebadges, table tent cards, welcome signage and more!

UNIQUE EVENT VENUES

If you're looking for an unconventional meeting space, then look no further. The Chicago Southland offers a multitude of unique venues that combine meeting space with unique activities. From the new indoor go kart track to award-winning microbreweries and the newest National Monument to acres of scenic forest preserves, we have unique venue options adding hands-on experiences to your next event.

ON-SITE ACTIVITIES/ ENTERTAINMENT

If you're just looking for entertainment or an activity to enhance your next event taking place at one of our traditional meeting spaces, the Chicago Southland offers mobile activities such as teambuilding and sip and paint options, as well as on-site hotel activities and social responsibility ideas.

SOCIAL RESPONSIBILITY

Events can practice social responsibility by donating money, products or services to social causes or partake in programs that can benefit charities and local community programs.

COMMUNITY SERVICE PROJECTS

The Chicago Southland CVB can coordinate a community service project benefitting a Chicago Southland non-profit organization ranging in focus from children, youth support groups and special needs recreation to animals, religious and environmental groups. The projects range from building items, cleaning up a designated area, making fleece blankets or delivering meals to those in need.

FACILITIES

- 55 Hotel/Motel Properties with over
- 4,000+ sleeping rooms including
- 4 Full-Service hotel facilities
- Unique Dining to accommodate your group

ACCESSIBILITY

- Easily accessible via Interstates 55, 57, 80, 94, 294 and 355
- Serviced by Midway and O'Hare Airports with over 3,099 flights daily
- Within a five-hour drive of eight states

AFFORDABILITY

- FREE Parking at all Chicago Southland hotels
- Affordable hotel room rates

LOCATION

- 25 minutes from downtown Chicago
- Bordered by Midway Airport

ATTRACTIONS

- Antique Shopping Areas
- Historic Shopping & Architecture
- Family Entertainment Centers
- Numerous Museums
- 34 Public and Semi-private Golf Courses
- Performing Art Centers/Theatres
- Railfan Sites

JUST BEYOND CHICAGO SOUTHLAND

- Chicago Attractions
- Chicago Skyline Cruises
- Chicago's Largest Zoo
- Riverboat Casinos

Fast Phone Facts

**Chicago Southland Convention
and Visitors Bureau
708-895-8200 Toll Free 888-895-8233**

VISITOR INFORMATION

Illinois Hotel & Lodging Association 312-346-3135
Illinois Bureau of Tourism 800-226-6632
Illinois Restaurant Association 312-787-4000

VISITOR INFORMATION CENTERS

Chicago Southland Visitor Information Center
Chicago Southland Lincoln Oasis
700 East Tri State Tollway
South Holland, IL 60473
Days/Hours: Open 7 days a week

AIRPORT TRANSPORTATION

1st US Taxi	708-361-1222
303 Taxi	708-335-8294
A Southside Limousine Service	708-633-7155
A V.I.P. Limousine	708-425-0401
Abercrombie Limousines Limited	815-469-1091
Absolute Dream Limousine Service, Inc.	708-535-7400
	708-229-9400
A-Bylak Limousine	708-425-7300
Alante Limo	800-450-7700
All James Jones Limousine	773-785-5466
Allegiance Limousine	708-478-1600
Allegro Limousine Service, Inc.	708-895-9998
American Dream Limousine	708-301-2700
American Family Taxi & Limo	708-705-0711
American Taxi Dispatch	708-424-7878
Amm's Limousine Service, Inc.	847-446-5148
Aries Charter Transportation	773-826-2000
Avanti Limousine	708-645-6650
Beverly Express Transportation	312-833-0288
Blue Line Taxi	708-679-6859
Butler Limousine Service	708-758-5466
Carolyn's Classic Limousine Service, Inc.	708-335-2464
Chicago Ridge Cab Company	708-422-2222
Clanton Limousine Service LTD	708-205-6476
Coach USA - Chicago	773-254-6400
Coach USA Airport Super Saver	800-248-TRIP
Cozy Carriage Limo	708-336-3680
Drive U Livery	815-277-7870
Embark Reservation Center	630-920-8888
Express on Time Taxi and Limo	708-532-0123
Go Airport Express	888-284-3826
H & M Limousine	847-807-6098
Holiday/Orland Park Limousine, Inc.	708-362-2549
Kendon Transportation Systems	800-767-1925
	708-388-4466
Lawn Limousine	708-597-2787
Luxury Limousine of Orland Park	708-460-8388
Mainstreet Limo Inc.	708-425-0077
Manny's Limousine Service	708-785-1008
Marquee Limousine	708-403-0577
McNamara Taxi Cab Service of Hickory Hills/Palos Heights	708-499-5777
McNamara Taxi Cab Service of Oak Lawn	708-420-4704
Metro Checker	708-499-4222
New Lenox Limousine	773-653-5466
	888-546-6525
O'Brien's Taxi Service	773-600-3469
Orland Hills Limo Service	800-215-0516
Primo Limo	708-546-3495
Regency Enterprise Limousine	708-755-8800
Southtown Limousine	708-301-1787
Southwest Limousine	708-349-0400
Visions Taxi	708-932-0568
Watkins Transportation	708-825-9207
White Knight Limo Service	708-798-0053



Credit: Chicago Zoological Society



"A tremendous help to our event. Excellent knowledge and professionalism by convention events planner."

--Altgeld/Carver High School

Fast Phone Facts



AMBULANCE SERVICE

AeroMedical Transport Specialists	703-791-6644
American Jets	800-225-3538
Advanced Air Ambulance	800-633-3590
Global Air Response	800-631-6565
U.S. Air Ambulance	800-633-5384

BUSES

Aries Charter Transportation	773-826-2000
Greyhound	800-231-2222
Pace/RTA Travel Information Center	708-836-7000

CAMPGROUNDS & RECREATIONAL VEHICLE PARKS

The Emerald Trails	708-672-8700
Enchanted Shores of Killarney	708-258-6040
Plum Creek Nature Center	708-946-2216
Illinois Campground Association Directory	866-895-2267
www.illinoisgocamping.com	

CAR RENTAL

AAA Automobile 24 Hour Service	800-222-4357
Alamo Rent A Car	800-327-9633
Avis Rent A Car	800-331-1212
Budget Rent A Car	800-527-0700
Dollar Rent A Car	800-800-4000
Enterprise Rent A Car	800-325-8007
Hertz	800-654-3131
National Car Rental	800-227-7368
Thrifty Car Rental	800-367-2277

CHARTER BUSES

Aries Charter Transportation	773-826-2000
Chicago Charter Bus Company	312-667-0906
Chicago Charter Express	312-666-1000
Chicagoland Coach Lines	630-453-4493
Chicago Trolley & Double Decker Company	773-648-5000
Embark Reservation Center	630-920-8888
Free Enterprise System	800-323-5281
	708-474-7474
GOGO Charter Bus	312-546-3925
Kendon Transportation Systems	800-767-1925
	708-388-4466
Mid America Charter, Inc.	800-323-0312
Private Landing Corp	708-515-5508

CHILD CARE REFERRAL SERVICES

Action for Children	312-823-1100
American Childcare, Svc.	312-644-7300
Kiddie Corp	800-942-9947

EMERGENCY NUMBERS

Emergency Only (in most municipalities)	911
Federal Bureau of Investigation	708-349-0004
	312-421-6700
National Poison Control Center	800-222-1222
State Highway Patrol	312-368-4636
State Police, Cook County	847-294-4400
State Police, Will County	815-726-6377

HANDICAPPED TRANSPORTATION

Handicapped Transportation Service	708-535-3833
------------------------------------	--------------

HOSPITALS

Advocate Christ Medical Center, Oak Lawn	708-425-8000
Advocate South Suburban Hospital, Hazel Crest	708-799-8000
UChicago Medicine Ingalls Memorial, Harvey	708-333-2300
Little Company of Mary Hospital and Health	
Care Centers, Evergreen Park	708-422-6200
Metrosouth Medical Center, Blue Island	708-597-2000
Palos Community Hospital, Palos Heights	708-923-4000
Franciscan Health, Olympia Fields	708-747-4000
Silver Cross Hospital, New Lenox	815-300-1100

PHARMACIES (24 HOUR)

CVS	
Calumet City	708-832-2943
Walgreens	
Calumet City	708-868-5669
Hickory Hills	708-599-5603
Lansing	708-895-7937
Midlothian	708-687-1604
New Lenox	815-485-2735
Oak Lawn	708-425-6960
Olympia Fields	708-747-0121
Orland Park	708-532-7781
Orland Park	708-460-2021

RAIL

Amtrak	800-USA-RAIL
	800-872-7245
Summit (SMT), Archer Avenue & South Center Avenue	
Homewood (HMW), 18015 Park Avenue	
RTA/Metra	312-836-7000

ROAD CONDITIONS

312-DOT-INFO

"Whenever we hold an event in the Southland area, I know I can count on the Chicago Southland CVB for wonderful support. It always makes my job of running a conference so much easier. Thanks for always being there for me."

--Mary Lou Wetmore, Illinois Association for Floodplain and Stormwater Management

Airports

AIRPORTS

Chicago Midway International Airport

Airlines Serving Midway Airport

Delta

Porter Airlines

Public Charters

Southwest Airlines

Volaris Airlines

773-838-0600

800-221-1212

888-619-8622

877-359-7595

800-435-9792

866-988-3527

"Thank you, Kristy, for all the special services, materials and gifts that you provided to make our youth conference a success. It was very successful, and we could not have done it without you. Be Blessed, God loves you and so do we!"

-- Doris Wilson, The National Sorority of Phi Delta Kappa, Inc.

Chicago O'Hare International Airport

773-686-2200

800-832-6352

Domestic Airlines Serving O'Hare Airport

Air Choice One

866-435-9847

Alaska Airlines

800-252-7522

American Airlines

800-433-7300

Delta

800-221-1212

Frontier Airlines

801-401-9000

Jet Blue

800-538-2583

Spirit Airlines

801-401-2222

Sun Country Airlines

651-905-2737

United Airlines

800-864-8331

Volaris Airlines

866-988-3527

Buit Field

Lansing Municipal Airport

708-534-8282

708-418-5888



MILEAGE TO CHICAGO SOUTHLAND

The Chicago Southland is approximately 22 miles from the City of Chicago's downtown area.

From The North

Minneapolis, MN	435
Milwaukee, WI	115
Montreal, Quebec	850
New York, NY	824

From The East

Baltimore, MD	690
Boston, MA	972
Detroit, MI	304
Indianapolis, IN	185
Norfolk, VA	831
Philadelphia, PA	760
Raleigh, NC	806
Toledo, OH	232
Washington, D.C.	693

From The West

Boise, ID	1683
Dallas, TX	895
Denver, CO	974
Des Moines, IA	369
Los Angeles, CA	2074
Omaha, NE	481
Phoenix, AZ	1691
Portland, OR	2105
Quad Cities, IA	201
Salt Lake City, UT	1412
San Francisco, CA	2164
Seattle, WA	2035

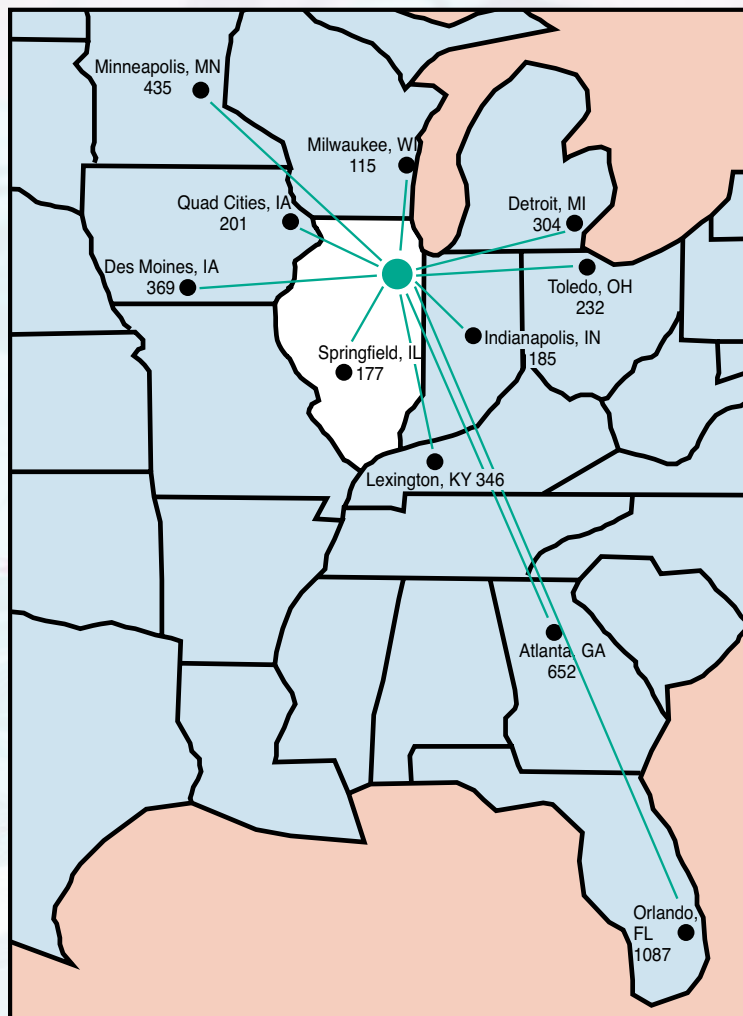
From The South

Atlanta, GA	652
Birmingham, AL	620
Lexington, KY	346
New Orleans, LA	890
Orlando, FL	1087
Springfield, IL	177
St. Louis, MO	264

Average Flight Times To Chicago Southland

Midway and O'Hare Airports

Atlanta, GA	1 hour 25 minutes
Dallas, TX	2 hours 8 minutes
Denver, CO	2 hours
Los Angeles, CA	4 hours
Minneapolis, MN	1 hour 10 minutes
New Orleans, LA	2 hours 15 minutes
New York, NY	1 hour 30 minutes
Orlando, FL	2 hours 15 minutes
San Francisco, CA	4 hours 20 minutes
Washington, D.C.	1 hour 40 minutes



Highway Nomenclature

I-55	Adlai E. Stevenson Expressway
I-57	Interstate 57
I-90W	John F. Kennedy Expressway
I-90E	Chicago Skyway
I-94	Dan Ryan Expressway
I-294	Tri-State Tollway
I-355	Veterans Memorial Tollway
I-394	Bishop Ford Freeway

Climate

Month	Average Daily Temperature Max/Min
January	31/17
February	35/20
March	47/29
April	59/39
May	70/48
June	80/58
July	84/64
August	82/63
September	75/54
October	62/43
November	48/32
December	35/21

Event Services

The Chicago Southland Convention & Visitors Bureau can assist you in many ways, from site selection through on-site registration. We are your primary source of information for the Chicago Southland region. You can rely on the expertise of our professional staff to assist you in all facets of planning your next event. We offer a variety of FREE professional services to groups booked through the CSCVB: Name Badges, Welcome Banners and Table Tents to just name a few.

PRE-EVENT SERVICES

The Pre-Event Services are available prior to your event in the Chicago Southland.

Brochure Distribution

A variety of brochures, videos and electronic files for individuals and groups are available upon request to event planners.

Chicago Southland App

The Bureau has an app that allows visitors to not only plan their visit, but to find amenities close by while here. The CVB can provide a link to integrate into the event's app or visitors can download it by searching Chicago Southland through the App Store or on Google Play.



Chicago Southland Destination Video

Your group can discover the sights and sounds of Chicago Southland through an interactive video experience by simply clicking to explore the attractions and destinations within the video! A link will be provided to the client.

Event Listing

If your event is open to the public, it can be listed in the Chicago Southland Festivals & Events Guide (if deadline is met), website, weekly fax to hotels, event hotline and social media outlets.

Event Suppliers

Let us introduce you to the local suppliers who can help make your event a success including audio/visual, printing, language services and transportation companies.

Itinerary Planning

We can assist you in planning pre/post tours incorporating Chicago Southland and City of Chicago sites.

Marketing Assistance

We can assist in the promotion of your event by sending out news releases or supplying you with our media list (min. of 15 days notice). The Bureau can also promote your event through our social media outlets.



Media Kit

Upon request, we can provide you with a media mailing list, area background stories and electronic photos.

Online Reservation Link

If your group requires two or more hotels in the Chicago Southland area, the Bureau can provide a custom url for online reservations.

Pre-Promotion

Depending on previous event's location, the Bureau can provide a staff member and literature to help promote the Chicago Southland region as the future event site (restrictions apply).

Save The Date Postcards

Save the Date postcards are available to promote your upcoming Chicago Southland event (100-500 people booked through the Bureau with 50 total room nights). These postcards are also available electronically. Post cards will be mailed/emailed by event organization.



Site Inspections

The Chicago Southland CVB can provide you with a personal site inspection of hotels, convention center, expo centers, meeting/event facilities and attractions.

Unique Meeting Places & Activities

If it is an unconventional meeting place you are looking for, we have a list of facilities to accommodate your group, as well as a list of mobile activities to bring onsite.

Event Services

ON-SITE SERVICES

On-Site Services are the services available during your event in the Chicago Southland.

Corporate Social Responsibility

The Bureau can coordinate a donation drop off for your event (i.e. eyeglasses, canned food, ink cartridges, cell phones, clothes, etc.) or assist in finding a local community service project (min. 15 business days notice).

Executive Gift Basket

A basket containing Chicago Southland regional items can be presented to the event planner, dignitary or executive of your choice (50 total room nights required).

Literature

We will provide you with complimentary copies of our printed material including: Visitors Guides, Travelers Maps, Coupon Books, Festivals & Events Guides and Public Transportation Brochures.

Name Badges

Self-adhesive or hanging name badges with the Chicago Southland logo are



complimentary to groups booked through the Chicago Southland CVB. A minimum of 50 room nights booked is required for the Bureau to print attendees' names on the badges (min. 15 business days notice). Names need to be submitted in an Excel format.

Official Greeting

We can arrange for a welcome letter and/or welcome by a local dignitary (min. 30 days notice).

Plastic Bags

The Bureau has plastic bags (11.5" x 15") available for registration packets or information distribution.



Profile Sheets (Electronic)

Customized profile sheets can be provided in a .pdf format and include important information such as nearby pharmacies, grocery stores, dry cleaners, laundromats, etc.

Registration Assistance

Registration assistance can be provided to all groups booked through the Chicago Southland CVB (min. 50 total room nights booked and 30 days notice). This service is based on staff availability with a four-hour limit.

Table Tent Cards

Customized table tent cards (8-1/2" x 11" single-fold) are available (min. 15 business days notice).

"Staff at the CVB and the Doubletree were exceptional. All went out of their way to make us feel welcome and important.- quite nice, considering we were a relatively small group. Thanks for all your help!"

-- Midwest Association of Student Employment Administrators



Welcome Signage

The Bureau can provide you with the following signage options for display at your event:

Promotional Sign - rectangular, glossy paper 47.25"w x 12" h (min. 50 room nights and 15 business days notice)

Signboard - foam core board 2' x 3' (min. 100 room nights and 15 business days notice)

Customized Welcome Banner - durable vinyl with grommets 8' x 3' (min. 100 room nights and 15 business days notice)

All welcome signage will contain the Chicago Southland CVB logo. Clients can receive ONE signage option only and will need to provide graphics (high resolution) and copy 15 business days prior to the event.

POST-EVENT SERVICES

Post Event Services are the services following your event in the Chicago Southland.

Pick-Up Report

The Bureau can provide a pick-up report from all participating hotel properties.



Credit: Charles Cherney Photography

Chicago Southland Full Service Facilities

	Area	Guest Rooms	Doubles	Singles	Suites	Meeting Rooms	Total Meeting Space Sq. Ft.	Largest Meeting Room Sq. Ft.	Banquet Capacity	On-Site Catering	Business Center	Continental Breakfast	Fitness Center	Pool (Indoor/Outdoor/Both)	Restaurant	Room Service	Shuttle	Mileage to Midway	Mileage to O'Hare	Airport Transportation	Hardwired Internet Common Area	Hardwired Meeting Space	Hardwired Guest Rooms	Wireless Internet Common Area	Wireless Internet Meeting	Wireless Internet Guest Rooms
Doubletree by Hilton Chicago-Alsip	2	188	102	86	5	13	15,000	6,716	600	Y	Y	N	Y	I	Y	Y	Y	8	30	Y	N	N	N	Y	Y	Y
Georgios Banquets, Quality Inn & Suites Conference Centre	2	117	58	59	32	13	25,000+	15,000	1,200	Y	Y	Y	Y	B	Y	N	N	22	34	N	N	\$	Y	Y	Y	Y
Holiday Inn Chicago Matteson Conference Center	5	197	94	103	3	9	9,702	9,126	500	Y	Y	N	Y	I	Y	Y	N	25	47	N	N	Y	Y	Y	Y	Y
Homewood Suites/Elements by The Odyssey	2	-	13	68	81	6	6,480	6,013	400	Y	Y	Y	Y	I	N	N	N	20	35	N	N	N	Y	Y	Y	Y





5000 West 127th Street
Alsip, IL 60803

Total Square Footage	15,000
Total Rooms/Suites	188/5
Largest Meeting Space	6,716

The hotel is situated south of Chicago's Midway Airport. A short drive to downtown Chicago, Navy Pier, Museums, United Center, Art Institute and shopping on the Magnificent Mile. The hotel offers convenient access to all the metropolitan Chicago area via I-294 Tri-State Tollway or choose easy service through any of the Metra train stations nearby.

Meeting Facilities & Service

15,000 Square feet of flexible meeting and banquet space. Thirteen meeting rooms, including the Grand Ballroom and The Woods, accommodating up to 600 guests. We offer a complete banquet and conference services staff and audio/visual team.

Accommodations & Amenities

193 GUEST ROOMS (5 suites). Non-smoking and handicapped accessible rooms available. ADA & FEMA approved facility. Complimentary local area shuttle service. Complimentary parking. State-of-the-art business center. Multi-lingual staff. Same-day valet dry cleaning & laundry. Made-Market Pantry. In-Room Dining, Allgauer's Restaurant, Spotlight Lounge. Heated indoor swimming pool. Fully-equipped fitness center. Seasonal outdoor patio with lounge furniture to enjoy.

High-Speed Internet Access and remote guestroom printing. Bedroom with king or two double beds. Two-line telephone with voicemail and data port. Coffeemaker with complimentary coffee and tea. 25" cable TV with pay-per-view movies. Iron and ironing board. Hairdryer. Individual climate control. Electronic door locks. Warm chocolate chip cookies await you at over 300 Doubletree locations in the USA, Canada and Latin America.

Area Amenities

Golf course, putting green, tennis courts, hiking trail and horseback riding nearby. Close to Cooper's Hawk Winery & Restaurant, Chi Tung Restaurant, In The Game Family Entertainment Center and Children's Museum in Oak Lawn. Chicago Ridge Mall-5 miles, Performing Arts Center-8 miles, Hollywood Casino Amphitheater-8 miles, Casino Boats-10 miles, SeatGeek Stadium-5 miles, Soldier Field-18 miles, Downtown Chicago-20 miles, Brookfield Zoo-20 miles, Chicagoland Speedway-20 miles, Navy Pier-20 miles and Wrigley Field-25 miles.

Airport & Transportation

Midway Airport-8 miles, O'Hare Airport-22 miles, Metra Commuter Rail Station-4 miles
Complimentary local area hotel shuttle service based on availability.

Rewards Program

Hilton Honors is the only hotel guest reward program that lets you earn both hotel points and airline miles for the same stay at more than 4,250 hotels worldwide. With the Hilton Honors Event Planner program, Event Planners can earn Points & Miles for qualifying events. Ask your sales person for details.

Scan to view a
virtual tour of
this property

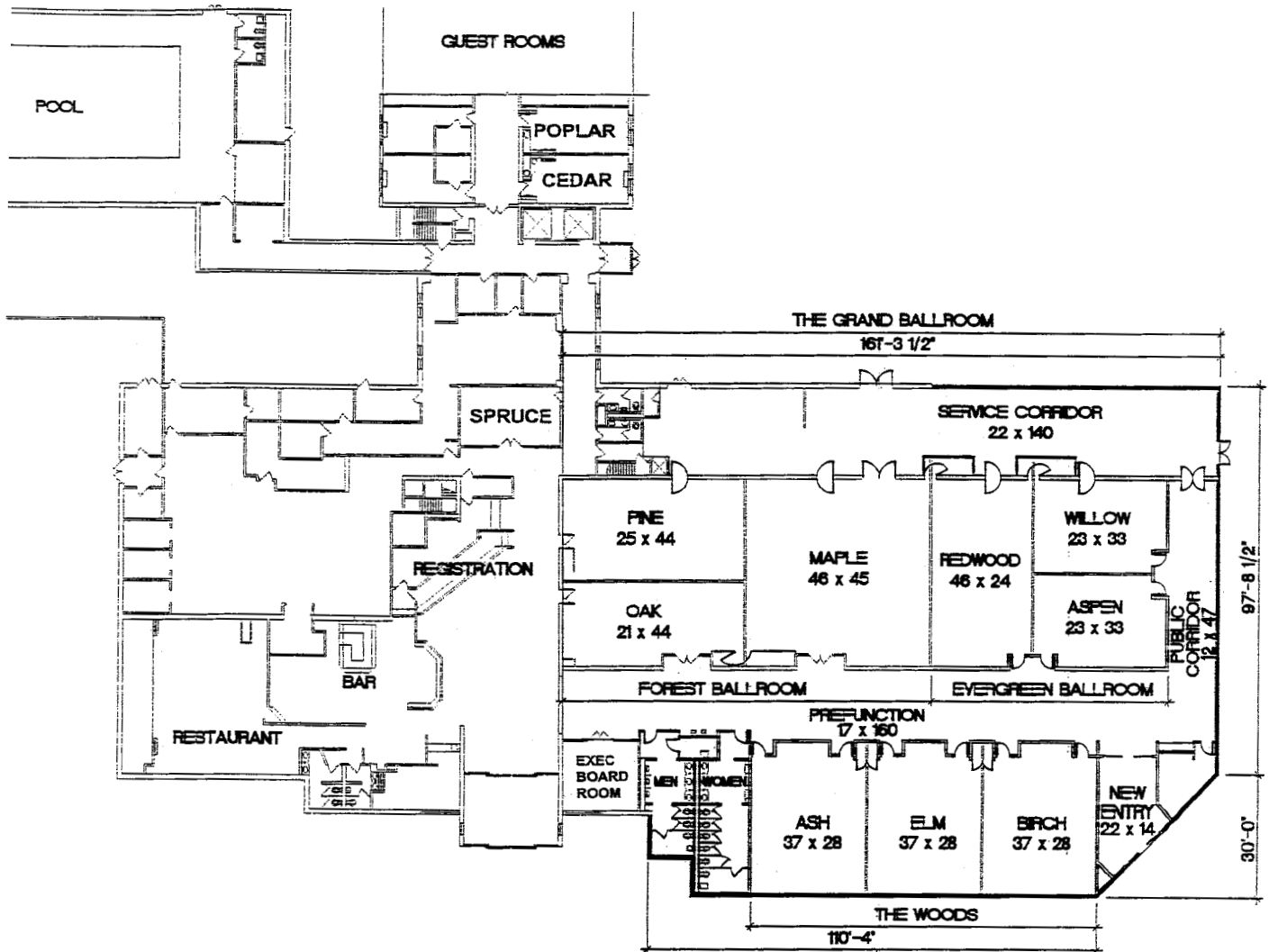


At A Glance

- 15,000 Sq.Ft. of Unobstructed Meeting Space
- 193 Guestrooms
- Award-Winning Allgauer's Restaurant
- Spotlight Lounge
- The Pantry
- Shuttle To/From Midway for Overnight Guests - Complimentary Hotel Airport Shuttle
- Complimentary Parking
- 24-Hour Business Center
- Fitness Center
- Indoor Pool



5000 West 127th Street
Alsip, IL 60803



Room	Dimensions	Sq. Ft.	Banquet	Classroom	Theatre	Reception	Ceiling	10'x10'	8'x10'
Grand Ballroom	146'x46'	6,716	600	400	800	600	12'	44	44
Forest Ballroom	89'x46'	4,094	320	225	400	320	12'	28	28
Pine Room	44'x25'	1,100	60	32	50	60	12'	n/a	n/a
Oak Room	44'x21'	924	60	40	60	60	12'	n/a	n/a
Maple Room	45'x46'	2,070	150	125	180	150	12'	n/a	n/a
Evergreen Ballroom	57'x46'	2,622	180	170	300	180	12'	16	16
Willow Room	33'x24'	792	50	40	50	50	12'	n/a	n/a
Aspen Room	33'x22'	726	40	36	50	40	12'	n/a	n/a
Redwood	24'x46'	1,104	80	48	70	80	10'	n/a	n/a
The Woods Ballroom	84'x34'	2,856	240	144	260	215	10'	12	12
Ash Room	28'x34'	952	64	40	50	64	10'	n/a	n/a
Elm Room	28'x34'	952	64	40	50	64	10'	n/a	n/a
Birch Room	28'x34'	952	64	40	50	64	10'	n/a	n/a
Spruce Room	24'x14'	336	24	12	30	24	10'	n/a	n/a
Poplar Room	25'x12'	300	16	12	30	16	10'	n/a	n/a
Cedar Room	25'x12'	300	16	12	30	16	10'	n/a	n/a
Executive Boardroom	18'x14'	252	n/a	n/a	12	n/a	10'	n/a	n/a



8800 West 159th Street
Orland Park, IL 60462

Total Square Footage	25,000+
Total Rooms/Suites	117/32
Largest Meeting Space	15,000

Welcome to Georgios Banquets, Quality Inn & Suites Conference Centre, as one of the most popular places to celebrate, dine and spend the night in the south suburbs of Chicagoland. Georgios offers a rare suburban luxury: a newly remodeled hotel and conference centre encompassing our banquet facility. Georgios is capable of hosting up to 1200 guests in our 25,000 sq. foot facility. Come relax in our 150 NEWLY renovated sleeping rooms and enjoy our new on-site restaurant and lounge.

As you enter Georgios Banquets, Quality Inn & Suites Conference Centre through the main hotel lobby, you immediately notice the attention to detail...from the spiral staircase to the tastefully chosen colors...your wedding or special occasion deserves this kind of luxury. Georgios Banquets features your choice of four ball rooms: the Sunset, Ravinia, Starview and Clarion. All of our Banquet Rooms encompass Grand Chandeliers, a Beckoning Dance Floor, a Personal Staircase, 18' Ceilings, Private Hospitality Room & Windows or Skylights creating an Intimate Elegant Atmosphere for your Guests!

Meeting Facilities & Services

Our facility encompasses approximately 25,000 square feet of flexible conference, meeting and banquet space. Thirteen elegantly furnished multifunction rooms and a magnificent 15,000 square foot grand ballroom are perfectly suited for any business or social occasion up to 2,500 people. High speed internet is available in banquet and conference facilities. Our attentive staff, comfortable function space and great location make us the perfect choice for your next conference, meeting or banquet.

Accommodations

The property features 149 newly renovated sleeping rooms, with 32 suites (12 extended stay suites are also available). To compliment our hotel, guests enjoy the following room amenities: Free high speed internet access, hair dryer, iron and ironing board, safe, refrigerator, microwave, coffee maker and oversized work desks. Hotel guests also enjoy complimentary hot and deluxe continental breakfast, coffee (24 hours a day) and weekday newspaper.

Area Amenities

Georgios Banquets, Quality Inn & Suites Conference Centre is conveniently located to area businesses, golf courses, shopping, many restaurants and entertainment.

Airport & Transportation

Midway Airport is 22 miles away with O'Hare Airport 34 miles away. The Metra Commuter Rail station is 2.9 miles away.

Rewards Program

Choice Privileges

10 points per every \$1 dollar spent for individual reservations (Group Blocks Do Not Apply)

Scan to view a
virtual tour of
this property

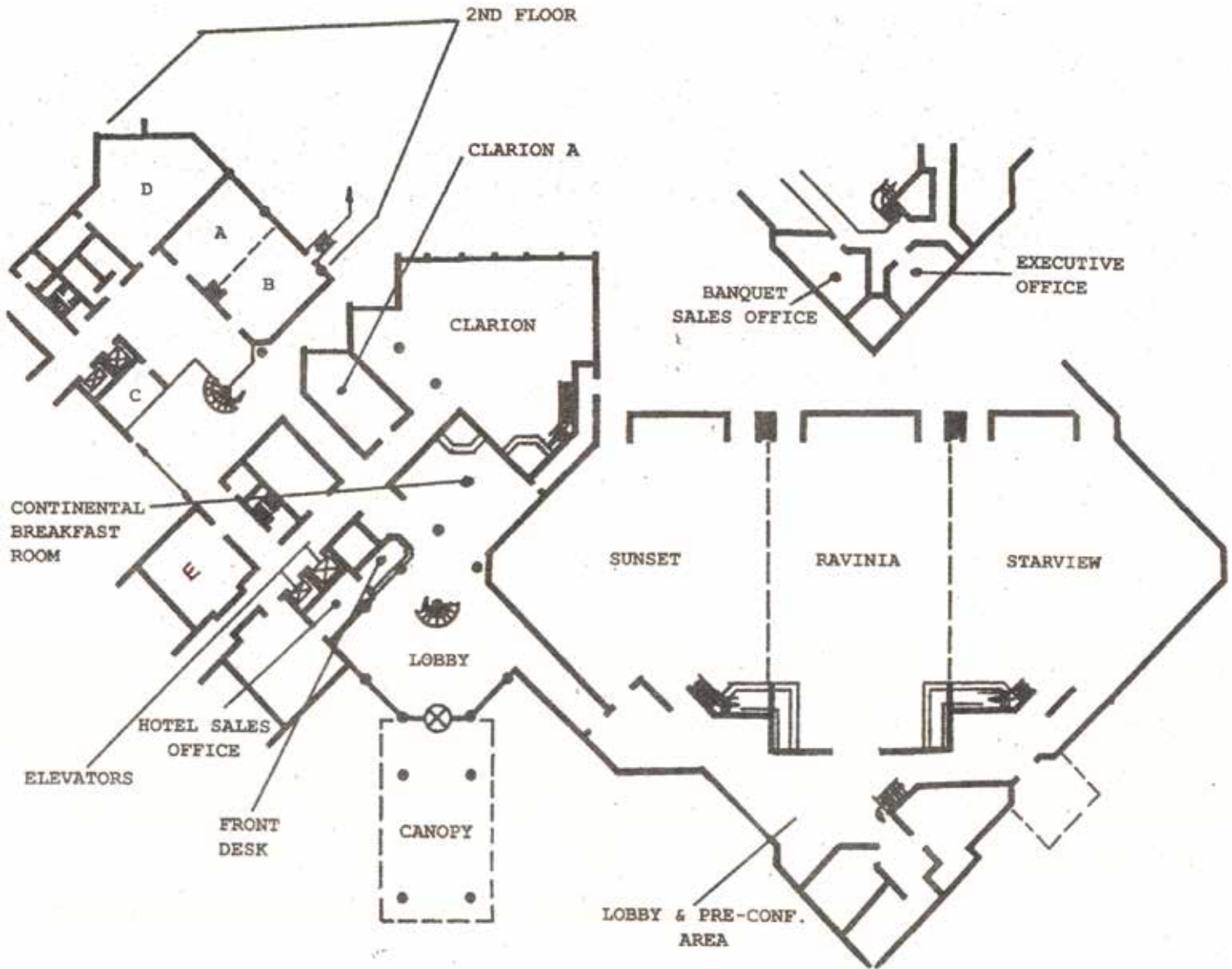


At A Glance

- Free Local Calls – Within a 7 Mile Radius
- Indoor Heated Pool & Spa with Retractable Roof
- Fully Equipped Fitness Centre, Arcade Room
- Enterprise Rent-a-Car & Limo Service on Property
- Handicap Facilities
- On Site Restaurant
- Business Centre - Fax and Copy Service Available (Charges May Apply)
- On-Site - Live Video Gaming
- Complimentary Managers Reception - Monday Evenings from 5PM-7PM
- Complimentary Hot and Deluxe Continental Breakfast



8800 West 159th Street
Orland Park, IL 60462



Room	Dimensions	Sq. Ft.	Banquet	Classroom	Theatre	Reception	Ceiling	10'x10'	8'x10'
Sunset	81'x65'	5,265	300	200	600	400	18'	n/a	n/a
Ravinia	55'x80'	4,400	300	200	600	400	18'	n/a	n/a
Starview	81'x65'	5,265	300	200	600	400	18'	n/a	n/a
Sunset/Ravinia		9,965	600	400	1,200	800	18'	n/a	n/a
Grand Ballroom	213'x70'	14,930	1,200	600	1,800	1,200	18'	n/a	89
Clarion	68'x45'	3,051	225	110	250	225	18'	n/a	n/a
Clarion A	45'x18'	576	40	30	50	40	8'3"	n/a	n/a
Clarion & Clarion A		3,627	265	130	270	265	8'3"	n/a	n/a
A	21'x28'	588	50	32	60	50	8'3"	n/a	n/a
B	21'x28'	588	50	32	60	50	8'3"	n/a	n/a
C	17'7"x10'	177	n/a	8-10	12	n/a	8'3"	n/a	n/a
D	26'x39'	1,000	60	48	80	60	8'3"	n/a	n/a
Room E24	24'x25'6"	625	40	50	80	40	8'3"	n/a	n/a

HOLIDAY INN CHICAGO MATTESON CONFERENCE CENTER

area 5



I-57 & Route 30
500 Holiday Plaza Drive
Matteson IL 60443

Total Square Footage	9,702
Total Rooms/Suites	197/3
Largest Meeting Space	9,126

Chicago Southland's hidden gem, Holiday Inn Chicago Matteson Conference Center, is the premier spot for overnight accommodations, business meetings, elegant affairs and everything in between.

Meeting Facilities & Services

All your event needs can be met with 10,000 square feet of flexible meeting and banquet space perfect for groups of 10 to 1,200. Our professional Sales and Catering Team will assist you with every detail for all occasions.

Accommodations

The 200 remodeled rooms include Holiday Inn's signature Perfect Pillow, Bath and Body Works bath amenities, complimentary wired and wireless internet access, 32" flat screen TV, work desk with ergonomic chair and much more. All rooms have mini fridges and microwaves. The Hotel Lobby holds a state-of-the-art Bar Louie, family friendly with an extensive menu and drink special. Bar Louie Matteson is the largest 3D TV Bar in the world. EAT. DRINK. BE HAPPY

Area Amenities

Lots of restaurants, shopping and Metra stop within 2 miles gives guests great dining options and easy access to downtown Chicago.

Rewards Program

IHG Rewards



At A Glance

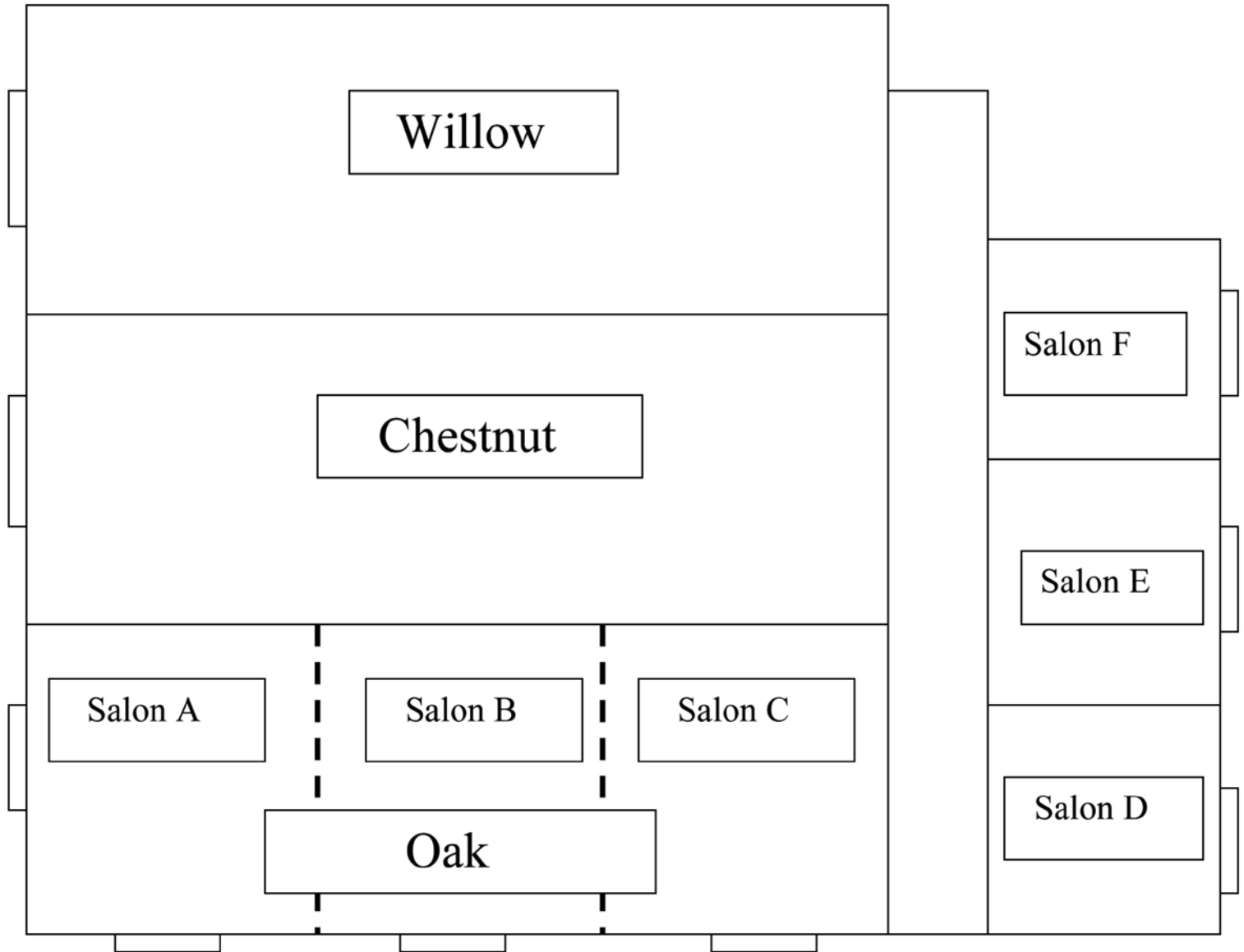
- Room Service
- Indoor Heated Pool w/ ADA Lift
- Business Center
- Complimentary USA Today
- Gift Shop
- Full Service Salon and Spa

Scan to view a
virtual tour of
this property





I-57 & Route 30
500 Holiday Plaza Drive
Matteson IL 60443



Room	Dimensions	Sq. Ft.	Banquet	Classroom	Theatre	Reception	Ceiling	10'x10'	8'x10'
Sycamore Ballroom	78'x117'	9,126	500	550	900	900	14'	50	60
Oak	44'x78'	3,432	200	200	300	300	14'	n/a	n/a
Chestnut	36'x78'	2,808	150	150	300	300	14'	n/a	n/a
Willow	36'x78'	2,808	150	150	300	300	14'	n/a	n/a
Salon A,B,C	26'x44'	1,144	50	45	100	100	14'	n/a	n/a
Salon D,E,F	24'x24'	576	30	25	40	40	10'	n/a	n/a

Capacities are subject to change according to additional set-up requirements

Pre-function is available at an additional cost



16235/16245 South LaGrange Road
Orland Park, IL 60467

Total Square Footage	6,480
Total Rooms/Suites	0/81
Largest Meeting Space	6,480

The Homewood Suites by Hilton Orland Park and Elements by The Odyssey, nestled in the heart of the Village of Orland Park, it is perfectly situated within a premiere upscale Lifestyle Center featuring restaurants, shopping, and state of the art Marcus Movie Theater. It is conveniently located on South La Grange Road, only 1.5 miles from I-80 and with easy access to local businesses.

Meeting Facilities & Services

Elements by The Odyssey offers a 6,480-square-foot grand ballroom, which features 17-foot ceilings and adjustable walls that give you the flexibility to divide grand ballroom into 6 separate smaller spaces (984 sq. ft. space each). Whether you're in need of Meeting Space Only or planning an event with Food and Beverage service, clients and guests will experience the finest in cuisine and service. Planning a Business Meeting/Seminar, Wedding, Formal Banquet, Bridal Shower or Rehearsal Dinner, Elements by The Odyssey has the resources you need to make your next event a huge success.

Accommodations

81 Non-Smoking All-Suite Accommodations. Four handicap accessible rooms available. Complimentary parking. On-Site Suite Shop Convenience Store. Complimentary Deluxe Breakfast Buffet every morning featuring hot entrees. Manager's reception Monday – Thursday evenings featuring Complimentary light meal, Soft Drinks, Beer and Wine. Daily Housekeeping (we even do the dishes!). Complimentary grocery shopping service. Complimentary Local Phone Calls. Daily Valet Laundry Service available. Indoor Pool. Onsite Fitness Center. Pets are now allowed.

All rooms and suites feature: Kitchens with Full Size Appliances including Refrigerator, Cooktop Stove, Microwave Oven, Coffee Maker, Toaster and Dishwasher equipped with China, Glasses, Utensils and Cookware. 27" and 32" Remote Control HD Flat Screen TV's with Cable and Premium Movie Channels. Two Phones with Easy Access Dataports. Voicemail Message System. Large Work Area with easy access Modern Hookup with Free Wireless Internet. Hairdryers, Irons and Ironing Boards.

Area Amenities

Being near the heart of downtown Orland Park allows for a multiple selection of restaurants and nightlife. Orland Square Mall-3 miles, Silver Lakes Country Club-4 miles, Hollywood Casino Amphitheatre-8 miles, Joliet Casinos-20 miles.

Airport & Transportation

Located 20 miles from Chicago Midway Airport, 35 miles from Chicago O'Hare Airport and 2.6 miles from the Metra Commuter Rail station.

Hilton HHonors

Be "At Home" and Earn Hilton HHonors Points for both hotel and airline miles. You don't have to choose! Contact our sales department today to learn more about the Hilton HHonors Event Planner Program and start earning points for your meetings and events.

Scan to view a
virtual tour of
this property

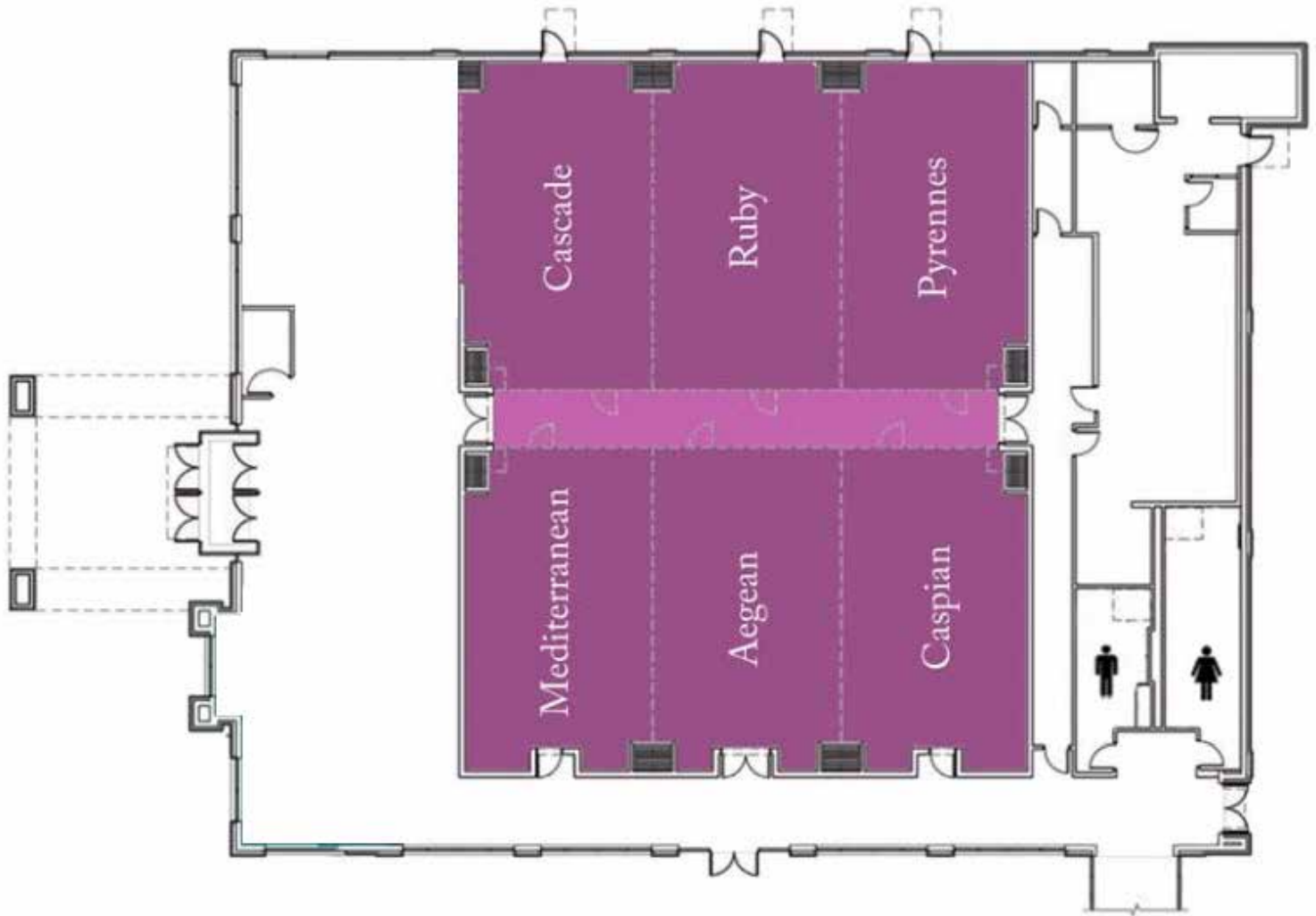


At A Glance

- 6,480 Sq.Ft. of Unobstructed Meeting Space
- Audio Visual Equipment available for rent
- Ideal for extended stay travelers
- Plenty of Complimentary Parking
- All Suites have a sleeper sofa
- Complimentary Wireless WiFi throughout entire hotel
- Indoor Heated Pool
- Pets are welcomed
- Hilton® HHonors™ Rewards
- 24-Hour Fitness & Business Center
- Conveniently located to restaurants and shopping



16235/16245 South LaGrange Road
Orland Park, IL 60467



Room	Dimensions	Sq. Ft.	Banquet	Classroom	Theatre	Reception	Ceiling	10'x10'	8'x10'
Grand Ballroom	144'x246'	6,013	400	300	525	350	17'	n/a	n/a
Pyrennes	24'x41'	984	48	36	64	n/a	17'	n/a	n/a
Ruby	24'x41'	984	48	36	64	n/a	17'	n/a	n/a
Cascade	24'x41'	984	48	36	64	n/a	17'	n/a	n/a
East Ballroom	72'x41'	2,952	175	132	224	150	17'	n/a	n/a
Caspian	24'x41'	984	48	36	64	n/a	17'	n/a	n/a
Aegean	24'x41'	984	48	36	64	n/a	17'	n/a	n/a
Mediterranean	24'x41'	984	48	36	64	n/a	17'	n/a	n/a
West Ballroom	72'x41'	2,952	175	132	224	150	17'	n/a	n/a

Chicago Southland Select Service Facilities

	Area	Guest Rooms	Doubles	Singles	Suites	Meeting Rooms	Total Meeting Space Sq. Ft.	Largest Meeting Room Sq. Ft.	Banquet Capacity	On-Site Catering	Business Center	Continental Breakfast	Fitness Center	Pool (Indoor/Outdoor/Both)	Restaurant	Room Service	Shuttle	Mileage to Midway	Mileage to O'Hare	Airport Transportation	Hardwired Internet Common Area	Hardwired Meeting Space	Hardwired Guest Rooms	Wireless Internet Common Area	Wireless Internet Meeting	Wireless Internet Guest Rooms
Baymont by Wyndham Chicago/Alsip	2	91	45	46	7	1	320	320	-	N	Y	Y	Y	N	N	N	Y	8	32	Y	N	N	N	Y	Y	Y
Baymont by Wyndham Chicago/Calumet City	4	67	30	37	12	1	396	396	30 w/BRFST	N	Y	Y	N	I	N	N	N	26	38	N	N	N	N	Y	Y	Y
BEST WESTERN Chicago Southland	2	52	28	24	7	1	550	550	40	N	Y	Y	Y	I	N	N	N	18	40	\$	N	Y	Y	Y	Y	Y
Clarion Inn - South Holland	4	79	27	52	1	2	1,468	860	70	Y	Y	N	Y	I	Y	N	N	19	41	N	Y	Y	N	Y	Y	Y
Hampton Inn & Suites - Bridgeview	1	77	49	28	32	1	500	500	30	N	Y	N	Y	I	N	N	Y	5	28	Y	N	N	N	Y	Y	Y
Hampton Inn & Suites Chicago Southland - Matteson	5	65	33	32	26	1	624	624	40	Y	Y	Y	Y	I	N	N	N	20	46	N	N	N	N	Y	Y	Y
Holiday Inn Express - Crestwood	2	123	65	58	-	2	1,000	1,000	60	N	Y	Y	Y	I	N	N	N	11	33	N	Y	Y	Y	Y	Y	Y
Holiday Inn Express & Suites Chicago-South Lansing	4	63	36	27	17	1	1,000	1,000	60	N	Y	Y	Y	I	N	N	N	23	44	N	Y	Y	Y	Y	Y	Y
Holiday Inn Express & Suites Orland Park/Mokena	3	66	41	25	30	2	1,070	730	-	N	Y	Y	Y	I	N	N	N	24	46	N	N	Y	Y	Y	Y	Y
La Banque Hotel	3	18	5	13	-	1	700	700	28	Y	Y	Y	Y	N	Y	UPON REQUEST	Y	20	40	N	Y	N	N	Y	Y	Y
Motel 6 - Bridgeview	1	108	63	45	2	1	276	276	-	N	Y	Y	Y	N	N	N	N	8	27	N	N	N	N	Y	Y	Y
Quality Inn & Suites - Harvey	3	65	18	47	6	1	400	400	-	N	Y	Y	Y	I	N	N	N	19	41	N	N	N	N	Y	Y	Y
Quality Inn & Suites - Matteson	5	65	31	34	1	1	800	800	50	Y	N	Y	N	N	N	Y	N	23	45	N	N	N	N	Y	Y	Y
Super 8 by Wyndham Monee	5	42	24	18	3	1	624	624	-	N	N	Y	N	N	N	N	N	29	51	N	N	N	N	Y	Y	Y
Travelodge by Wyndham Matteson	5	55	46	9	29	1	1,500	1,500	105	N	N	Y	Y	I	N	Y	N	23	45	N	N	N	N	Y	Y	Y

BAYMONT BY WYNDHAM CHICAGO/ALSIP

area 2



12801 South Cicero Avenue
Alsip, IL 60803

Indoor Corridor Property offering Extended Complimentary Breakfast, In Room Coffee Makers, Blow-dryer, Ironing Board, and Free Local Telephone Calls. Microwaves and refrigerators in all rooms. Other amenities include: Complimentary High Speed Internet, Free USA Today (Monday-Thursday), 33 Premium Cable Stations, Cardiovascular Fitness Room, 24 Hour Business Center, Complimentary Midway Airport Shuttle for ticket passengers flying out or in Midway Airport, to Amusement Centers, Golf, Shopping and many Restaurants in Hotel area. One Meeting Room and Free Parking. Ask about our Wyndham Rewards Program. Located 20 minutes from downtown Chicago, 8 miles from Midway Airport and 4 miles from the Metra Commuter Rail station. Located on Cicero Avenue South off I-294.

Total Square Footage	320
Total Rooms/Suites	91/7
Largest Meeting Space	320

At A Glance

- Extended Complimentary Continental Breakfast
- Airport Shuttle to/from Midway Airport for ticket passengers
- Complimentary WiFi service thru out the hotel
- 20-30 minutes from downtown Chicago
- Near Trinity Christian College/St. Xavier University



Room	Dimensions	Sq. Ft.	Banquet	Classroom	Theatre	Reception	Ceiling
Boardroom	25'x12'	320	-	20	50	25/30	9'

BAYMONT BY WYNDHAM CHICAGO/CALUMET CITY

area 4



510 East End Avenue
Calumet City, IL 60409

Close to downtown Chicago, 26 miles from O'Hare, 38 miles from Midway Airport, just over four miles to nearest Metra Commuter Rail station, indoor heated pool, FREE WiFi internet access, FREE continental breakfast, microwaves and refrigerators in-room, fitness center, pet-friendly and jacuzzi suites make the Baymont Inn & Suites Calumet City the ideal location for small meetings.

Total Square Footage	396
Total Rooms/Suites	67/12
Largest Meeting Space	396

At A Glance

- Indoor heated Pool
- Free WiFi internet access
- Microwave and mini fridges in rooms
- Jacuzzi Suites
- Meeting Space Available

Room	Dimensions	Sq. Ft.	Banquet	Classroom	Theatre	Reception	Ceiling
Meeting Room	22'x18'	396	30*	-	50	40*	9'

*with the use of breakfast area

BEST WESTERN CHICAGO SOUTHLAND

area 2



4375 Frontage Road
Oak Forest, IL 60452

Total Square Footage	550
Total Rooms/Suites	52/7
Largest Meeting Space	550

Welcome to the BEST WESTERN Oak Forest Hotel where customer service is top priority and accommodations are comfortable, warm and affordable. This Illinois Best Western hotel offers convenient access to many local attractions, shopping and dining options in and around Oak Forest, Illinois and is located 18 miles from Midway Airport, 40 miles from O'Hare Airport and just over 3 miles to the nearest Metra Commuter Rail station. Guests will enjoy beautifully appointed guest rooms featuring luxury bedding, 32-inch flat screen televisions with cable satellite television and free WiFi high-speed Internet access. To help make life on the road even more comfortable, this Oak Forest hotel offers rooms complete with a microwave and refrigerator. Guests of the hotel are greeted every morning with a complimentary full hot breakfast buffet. And after a long day, guests are welcome to take a refreshing dip in the magnificent indoor swimming pool, relax in the spa or work out in the fully equipped fitness center. The personable and attentive staff at the BEST WESTERN Oak Forest Hotel is ready to ensure an enjoyable stay in Oak Forest, Illinois. Make a reservation today and save!

At A Glance

- Accommodates up to 50 people
- Great for Training Classes
- Coffee and Tea Available
- Location: I-57 and I-80
- AV Equipment Available



Room	Dimensions	Sq. Ft.	Banquet	Classroom	Theatre	Reception	Ceiling
Meeting Room	24'x24'	550	40	36	50	40	10'

CLARION INN - SOUTH HOLLAND

area 4



610 Tollview Drive
South Holland, IL 60473

Total Square Footage	1,268
Total Rooms/Suites	79/1
Largest Meeting Space	860

The convenient freeway access off I-80/294 at Halsted Exit and only 20 minutes from downtown Chicago, 20 miles from Midway Airport, 41 miles from O'Hare and just under two miles from the nearest Metra Commuter Rail station make the CLARION INN OF SOUTH HOLLAND the ideal hotel choice for both business and leisure travelers. This hotel features Complimentary High Speed Internet, 24 Hour Business Center, Pavilion Pantry, Indoor Heated Pool, Fitness Center and a Restaurant on site. We provide full catering service and audio-visual equipment for all events. Our oversized guest rooms have refrigerators, microwaves, irons & ironing boards, coffee makers, hair dryers and feather bedding.

At A Glance

- Reasonable Rates
- Complimentary Audio/Visuals (few restrictions)
- Complimentary WiFi
- Complimentary Coffee and Water
- Free Meeting Room Set Up



Room	Dimensions	Sq. Ft.	Banquet	Classroom	Theatre	Reception	Ceiling
Milan Room	34'x27'	860	70	50	100	70	10'
Conference Room	17'x24'	408	-	20	35	-	-

HAMPTON INN & SUITES BRIDGEVIEW



7010 South Harlem Avenue
Bridgeview, IL 60455

The Hampton Inn & Suites Bridgeview-Chicago is conveniently located 5 miles from Midway International Airport, which is a great central location for regional meetings. We offer complimentary shuttle service for meeting attendees and free water service during your daily meeting. Our meeting space is 500 square feet and accommodates up to 35 attendees.

area

1

Total Square Footage	500
Total Rooms/Suites	77/32
Largest Meeting Space	500

At A Glance

- Great Central Location for Regional Meetings
- 5 Miles from Midway Airport
- Complimentary 55" Smart TV with HDMI Capacity (Meeting Room)
- Complimentary Shuttle Service
- Complimentary Water Service



Room	Dimensions	Sq. Ft.	Banquet	Classroom	Theatre	Reception	Ceiling
Meeting Room	21'x23"	500	30	24	40	30	10'

HAMPTON INN & SUITES CHICAGO SOUTHLAND - MATTESON



20920 Matteson Avenue
Matteson, IL 60443

Feel a little more at home as soon as you step into the lobby of the Hampton Inn & Suites Chicago Southland - Matteson. As you check-in and get settled, help yourself to a cup of coffee or tea from around-the-clock complimentary lobby service. In your room or suite, you'll notice conveniences and amenities sure to make you feel at home. You'll never look like you're living out of a suitcase when you stay at our hotel in Matteson. Keep your clothes looking fresh and crisp with your in-room iron and ironing board and start each day with a complimentary copy of USA Today and a cup of coffee brewed exactly the way you like it in your very own complimentary in-room coffeemaker. Your room is equipped with complimentary high-speed internet access to make it easy to e-mail photos of every landmark you visit during your stay in Chi-town. When the home office calls, handle tasks quickly in our 24-hour business center where you can print, copy, fax and e-mail from one convenient location. Even in Chicago, an evening in sounds like a good idea sometimes. No matter the weather, enjoy a swim in our indoor pool or work in time for an invigorating workout in our exercise room before heading up to your room to enjoy a movie on your 32" flat-panel TV that features a complimentary movie channel and a premium variety of your favorite cable channels. We are conveniently located 20 miles from Midway Airport, 46 miles from

area

5

Total Square Footage	624
Total Rooms/Suites	65/26
Largest Meeting Space	624

At A Glance

- 100% Hampton Guarantee
- Complimentary Hot "On the House" Breakfast
- Complimentary Wi-Fi Throughout the Hotel
- Indoor Pool and Fitness Center
- Complimentary Snacks at Check-in for HHonors Members



O'Hare and under 3 miles from the Metra Commuter Rail station.

Room	Dimensions	Sq. Ft.	Banquet	Classroom	Theatre	Reception	Ceiling
Lincoln Room	26'x24'	624	40	50	50	50	10'

HOLIDAY INN EXPRESS - CRESTWOOD

area 2



13330 South Cicero Avenue
Crestwood, IL 60445

Total Square Footage	1,000
Total Rooms/Suites	123/0
Largest Meeting Space	1,000

The Holiday Inn Express - Crestwood is conveniently located 11 miles from Midway Airport, 33 miles from O'Hare Airport, 3 miles from the nearest Metra Commuter Rail station and 15 miles from Downtown Chicago, with easy access from major interstates; I-294 (1) mile south, and I-57 (4) miles west. River Crest Shopping Center is adjacent to the hotel which includes a variety of stores, restaurants and attractions; Kohl's & Target, Applebee's, Portillo's restaurant, Lowes Movie Theater, Hollywood Miniature Golf, OTB & Casino Shuttle nearby. Complimentary Hot Breakfast Buffet, Free High Speed Internet, Complimentary Business Center, Indoor Pool/Fitness and Free Parking. Book a meeting at the Holiday Inn Express - Crestwood and receive Priority Club Meeting Planner Points.

At A Glance

- Complimentary White Board & Markers
- Bring in Your Own Catered Food & Beverage
- Variety of Attractions & Restaurants within Walking Distance
- Close to Train and Expressways for Business Meetings
- Complimentary Wireless Internet



Room	Dimensions	Sq. Ft.	Banquet	Classroom	Theatre	Reception	Ceiling
Chi Town	20'x25'	500	30	24	40	30	9'
Cal Sag	20'x25'	500	30	24	40	30	9'
Combined Rooms	20'x50'	1,000	40	25	60	40	9'

HOLIDAY INN EXPRESS & SUITES CHICAGO-SOUTH LANSING

area 4



2323 172nd Street
Lansing, IL 60438

Total Square Footage	1,000
Total Rooms/Suites	63/17
Largest Meeting Space	1,000

AN IHG® HOTEL

The Holiday Inn Express & Suites Chicago South - Lansing is the ideal place for groups and meetings of various sizes. Located in the Southern Suburbs of Chicago and within an hour of Midway and O'Hare Airports/6 miles from Metra Commuter Rail station, our cordial staff is ready to assist business travelers & meeting planners with their next event. Book with us today to earn IHG Business Rewards on your next meeting or group outing!

At A Glance

- IHG Business Rewards
- Audio/Visual Equipment Available
- Catering Options Available
- Flexible Setup Options
- Group Rates



Room	Dimensions	Sq. Ft.	Banquet	Classroom	Theatre	Reception	Ceiling
Express Room	40'x25'	1,000	60	30	70	60	8'

HOLIDAY INN EXPRESS & SUITES - ORLAND PARK/MOKENA

area 5



19220 Greenwich Drive
Mokena, IL 60448

AN IHG® HOTEL

Holiday Inn Express & Suites Orland Park/Mokena located 24 miles from Midway Airport, 46 miles from O'Hare and only ½ mile from the train station. Convenient access off I-80 and 191st street. We are 6.5 miles from Orland Square Mall with tons of shopping and restaurants, a short walk from Legends Sports Bar, Stoney Point Grill and Doc's Smokehouse & Craft Bar. We offer complimentary breakfast, WIFI, pool, fitness center, complimentary parking, business center and meeting planner points for in house meetings.

Total Square Footage	1,070
Total Rooms/Suites	66/30
Largest Meeting Space	730

At A Glance

- Complimentary Breakfast
- Indoor Pool
- Fitness Center
- IHG Rewards
- Across from Metra Station



Room	Dimensions	Sq. Ft.	Banquet	Classroom	Theatre	Reception	Ceiling
Meeting Room	26'x26'	730	40	40	40	40	10'
Boardroom	26'x13'	340	-	20	20	-	10'

LA BANQUE HOTEL

area 3



2034 Ridge Road
Homewood, IL 60430

This luxury hotel was built on the premise that discerning corporate visitors would want a hotel that offers the level of comfort and the services they are accustomed to. Our visitors are treated to quiet, plush guest rooms featuring superior quality mattresses, pillows and linens, luxurious bathrooms, well-lit work stations and state-of-the-art electronic devices. They have access to an extensive fitness center open 24 hours a day. At La Banque, we strive to offer every guest a V.I.P. experience.

La Banque's conference room is ideal for small groups up to 30 people. The table and seating arrangements are flexible and the room is equipped with the latest audio visual technology. La Voûte, the hotel's bistro, offers a balance of French cuisine and American favorites. Its Gold Bar is an intimate place for hotel guests to unwind. We are located just one block from both the Amtrak and Metra Electric Line, 44 minutes from Homewood to Downtown Chicago, McCormick Center and Soldier Field. We are also accessible to Interstates 80, 57 and I-294 within minutes. We are located 20 miles from Midway Airport and 40 miles from Chicago O'Hare International Airport.

Total Square Footage	700
Total Rooms/Suites	18
Largest Meeting Space	700

At A Glance

- 18 Luxuriously Appointed Rooms
- Complimentary Continental Breakfast
- 24 hour Extensive Fitness Center
- Train to Chicago
- French Bistro on site



Room	Dimensions	Sq. Ft.	Banquet	Classroom	Theatre	Reception	Ceiling
Conference Room	35'x20'	700	28	40	50-60	50	12'

MOTEL 6 - BRIDGEVIEW

area

1



9625 South 76th Avenue
Bridgeview, IL 60455

Total Square Footage	276
Total Rooms/Suites	108/2
Largest Meeting Space	276

Offering coffee in the morning and FREE local telephone calls. Other amenities include: dataport, remote controlled cable television, fitness room, high speed wireless internet access and indoor corridors. Located 17 miles from downtown Chicago, 8 miles from Midway Airport and 2.3 miles from Metra Commuter Rail station. Located at 76th Avenue & 95th Street just off I-294.

At A Glance

- Guest Laundry
- Fitness Center
- Free WiFi
- Vending Area
- Free Coffee in Morning



Room	Dimensions	Sq. Ft.	Banquet	Classroom	Theatre	Reception	Ceiling
Board Room	12'x23'	276	-	10	-	-	9'

QUALITY INN & SUITES - HARVEY

area

3



16920 Halsted Street
Harvey, IL 60426

Total Square Footage	400
Total Rooms/Suites	65/6
Largest Meeting Space	400

The Quality Inn & Suites - Harvey is located off of Interstate 294 and Halsted and is conveniently located only 25 minutes from downtown Chicago, 19 miles from Midway Airport, 41 miles from O'Hare and under 2 miles to the nearest Metra Commuter Rail Station. Quality Inn & Suites - Harvey is also located near several specialty restaurants and shopping centers. All suites include a microwave, refrigerator, coffee maker, hair dryer and sofa sleeper. Additional amenities include: Indoor Heated Pool, Fitness Center, Deluxe Continental Breakfast, HB01 & HB02 and free local calls. Presidential and Whirlpool Suites Available. Non-smoking and Handicap Suites Available. We specialize in accommodating Bus Tours, Family Reunions and Group Bookings. The Quality Inn & Suites - Harvey offers friendly, professional service and luxury accommodations without the high cost of a full service hotel.

At A Glance

- Indoor Heated Pool
- Exercise Room
- Guest Laundry
- Business Center
- Free Hot Breakfast



Room	Dimensions	Sq. Ft.	Banquet	Classroom	Theatre	Reception	Ceiling
Meeting Room	18'x20'	400	-	15	15	-	10'

QUALITY INN & SUITES - MATTESON



5200 West Lincoln Highway
Matteson, IL 60443

Quality Service, a Convenient Location and Affordable Prices make the Quality Inn & Suites a wise choice when planning your next function. We are located off I-57 East, Lincoln Highway (Route 30), just minutes from the Chicago Loop, 23 miles from Midway Airport, 45 miles from O'Hare Airport and just over 2 miles from the nearest Metra Commuter Rail Station. The Quality Inn & Suites is close to businesses, indoor shopping and recreational facilities with a wide variety of restaurants nearby. Amenities Include: Complimentary Continental Breakfast, Free Local Phone Calls, Free Movie Channel, In-Room Coffee Makers, Irons & Ironing Boards, Indoor Heated Pool, Whirlpool and Fitness Center, Meeting Room Amenities Include: TV/VCR, Whiteboard, Wet Bar and Data Port Hookup in every guestroom.

Total Square Footage	800
Total Rooms/Suites	65/1
Largest Meeting Space	800

At A Glance

- Complementary High Speed WiFi
- Breakfast Service Available* (additional fee required)
- Plenty of On-Site Parking
- Discounted Hotel Rooms for Meeting Attendees
- Complementary Water Service



Room	Sq. Ft.	Banquet	Classroom	Theatre	Reception	Ceiling
Conference Room #1	800	50	50	50	50	8'

SUPER 8 BY WYNDHAM MONEE



5825 West Monee-Manhattan Road
Monee, IL 60449

The Super 8 Monee is located off I-57 exit 335 east on Monee-Manhattan Road. The Super 8 Motel-Monee offers 45 rooms including Jacuzzi suites, king singles and queen doubles, 24 hour front desk, remote control cable TV and meeting room. The Super 8 Monee is located 29 miles from Midway Airport, 51 miles from O'Hare Airport and just over 3 miles from the nearest Metra Commuter Rail station.

Total Square Footage	624
Total Rooms/Suites	42/3
Largest Meeting Space	624

At A Glance

- Free Continental Breakfast for Guests
- Free Coffee
- Complimentary High Speed Internet
- Jacuzzi Suites
- Meeting Space Available



Room	Dimensions	Sq. Ft.	Banquet	Classroom	Theatre	Reception	Ceiling
Meeting Room	23.5'x24.5'	567	-	25	40	30	13'



950 Lake Superior Drive
Matteson, IL 60443

Total Square Footage	1,500
Total Rooms/Suites	55/29
Largest Meeting Space	1,500

We have a variety of different rooms, Standard Queen, King Suites and Whirlpool suites. Other amenities include an indoor pool and exercise facility. The Travelodge by Wyndham - Matteson is conveniently located 23 miles from Midway Airport, 45 miles from O'Hare and just over 2 miles from the nearest Metra Commuter Rail station.

At A Glance

- Free, Hot Breakfast
- Free Internet access
- Fitness Center
- Business Center
- Indoor Pool



Room	Dimensions	Sq. Ft.	Banquet	Classroom	Theatre	Reception	Ceiling
Meeting Room	25'x22'	550	57	24	40	60	14'
Breakfast Room	25'x38'	950	48	45	55	47	14'
Meeting & Breakfast Room	25'x60'	1,500	105	69	95	107	14'

Chicago Southland Area Guest Rooms

(for Chicago Southland hotels without meeting space)

Area	Guest Rooms	Suites
AREA 1 – BRIDGEVIEW & BURBANK - 641 Total Rooms		
Best Western Midway Airport - Burbank	62	24
Super 8 by Wyndham Bridgeview/Chicago Area	55	-
Woodspring Suites Midway - Burbank	-	122
Bridgeview Inn Motel	55	2
Budget Inn - Burbank	29	1
Clayton Motel - Bridgeview	18	1
Cloud 9 Motel - Bridgeview	22	-
New Relax Inn - Bridgeview	26	5
AREA 2 – ALSIP, CRESTWOOD, OAK FOREST, ORLAND HILLS & ORLAND PARK - 1,076 Total Rooms		
Hampton Inn - Orland Park	150	0
Motel 6 Inn - Alsip	80	-
Red Roof Inn - Alsip	60	0
Budget Lodge - Alsip	23	-
Key Motel - Alsip	20	-
Terrace Motel - Oak Forest	27	5
AREA 3 – CHICAGO HEIGHTS, EAST HAZEL CREST, HARVEY, HOMEWOOD & MARKHAM - 318 Total Rooms		
Days Inn by Wyndham Harvey/Chicago Southland	49	25
Motel 6 - Harvey	71	-
Rodeway Inn & Suites - Markham	42	14
The Star Motel - Chicago Heights	27	-
AREA 4 – CALUMET CITY, LANSING & SOUTH HOLLAND - 1,297 Total Rooms		
Comfort Suites - Lansing	-	64
EconoLodge	75	-
Extended Stay America - Lansing	-	122
Motel 6 - Lansing	48	2
Red Roof Inn - Lansing	108	-
Sleep Inn Hotel - Lansing	69	-
Super 8 by Wyndham South Holland	97	0
Travelodge by Wyndham - Lansing	132	-
Travelodge by Wyndham - South Holland	48	0
Clover Leaf Motel - South Holland	21	-
Holland Inn & Suites - South Holland	63	2
Starway Inn - Lansing	40	-
United Motel - Lansing	167	-
AREA 5 – MATTESON, MOKENA & MONEE - 975 Total Rooms		
Comfort Inn- Matteson	100	8
Quality Inn - Monee	40	4
Red Roof Inn & Suites - Monee	49	18
Super 8 - Mokena/Frankfort	63	6
Country Host Motel - Monee	24	-
Presidential Inn & Suites - Matteson	46	3



Credit: Chicago Zoological Society



Chicago Southland Additional Meeting Facilities

	Area	# Meeting Rooms	Total Meeting Space	Largest Meeting Room	On-Site Catering	Mileage to Midway	Mileage to O'Hare	Hardwired Internet Common Area	Hardwired Meeting Space	Wireless Internet Common Area	Wireless Internet Meeting
Governors State University	5	9	56,218	29,000	Y	28	58	Y	Y	Y	Y
Moraine Valley Community College	1	9	20,265	9,444	Y	17	27	N	Y	Y	\$
Prairie State College	3	4	2,785+	1,352	Y	22	43	N	Y	Y	Y
Trinity Christian College	2	34	35,950+	10,000	Y	9	29	Y	Y	Y	Y
Irons Oaks Environmental Learning Center & Teambuilding Course	3	2	2,300	1,300	N	21	42	N	N	Y	Y
Matteson Community Center	5	6	4,209	1,412	N	22	44	N	N	Y	Y
Orland Park Civic Center	2	3	6,650	3,885	N	14	31	N	N	Y	Y





Governors Highway &
University Parkway
University Park, IL 60466

Meeting Rooms	9
Total Square Footage	56,218
Largest Meeting Space	29,000

Governors State University offers state-of-the-art facilities including Center for Performing Arts, a 1,171-seat theatre suitable for meetings, presentations and special functions and the Center for Performing Arts Arena suitable for theme parties, receptions, meetings and presentations. Classrooms can be rented. Governors State University is 28 miles from Midway Airport, 58 miles from O'Hare Airport and under 2 miles from the nearest Metra Commuter Rail station.

At A Glance

- On-Site Catering
- State-of-the-Art Sound & Acoustics
- Free Parking
- Additional Reception Areas Available
- Opportunity for Full or On-Stage Set Up



Room	Dimensions	Sq. Ft.	Banquet	Classroom	Theatre	Reception	Ceiling
Center for Performing Arts	85'x100'	29,000	-	-	1,180	-	50'
Center for Performing Arts Arena	90'x60'	5,280	150	-	-	200	24'
<i>The following rooms can only be rented in conjunction with the rental of the Center for Performing Arts.</i>							
Engbretson Hall	54'x40'	2,227.5	60	60	120	60	20'
Hall of Governors	88'x56'	9,114.7	150	-	150	200	30'
Hall of Honors	32'x48'	2,291.6	90	80	130	150	10'
E Lounge	46'x30'	1,924.1	80	80	80	100	20'
F1622 Lecture Hall	42'x46'	1,349.4	-	125	125	-	20'
F Lounges	44'x32'	2,085.9	36	40	40	50	20'
Music Recital Hall	58'x58'	2,945.1	-	207-217	217	-	20'

*Center for Performing Arts is 85'x100', Stage is 120'x46' and Balcony is 85'x45' and can seat 400. Classrooms can be rented.



9000 West College Parkway
Palos Hills, IL 60465-2478

Meeting Rooms	9
Total Square Footage	20,265*
Largest Meeting Space	9,444

Moraine Valley Community College offers a variety of facilities for business meetings, conferences, workshops and seminars. The Moraine Business and Conference Center can accommodate from 75 to 800 people with flexible seating configurations. We offer catering with a wide range of menu options and affordable prices. The Gymnasium, classrooms and theaters also can be rented. Moraine Valley Community College is located 17 miles from Midway Airport, 27 miles from O'Hare Airport and just under 3 miles to the nearest Metra Commuter Rail station.

At A Glance

- 10 Minutes from I-55 & I-294
- Free and convenient parking
- A/V included in room rental
- Discounted rates for non-profits
- Personalized, friendly and flexible service

*39,265 with gym



Room	Sq. Ft.	Banquet	Classroom	Theatre	Reception
Moraine Rooms (1, 2 and 3 combined)	9,444	600	300	800	662
Moraine Rooms (1, 2 and 3 each)	3,148	200	100	265	331
Moraine Plaza (pre-function area)	3,477	-	-	-	365
Gymnasium (Cyclone Center)	19,000	500	2,000	-	-
Menker Theater	4,388	-	-	600	-
Oremus Theater	2,685	-	-	150	150
Fogelson Theater	3,000	-	75	100	-
Fogelson Foyer	748	56	-	-	78
Room D116	various capacity classrooms				

PRAIRIE STATE COLLEGE CONFERENCE CENTER

area **3**

The Conference Center 202 South Halsted Street
at Chicago Heights, IL 60411
Prairie State College

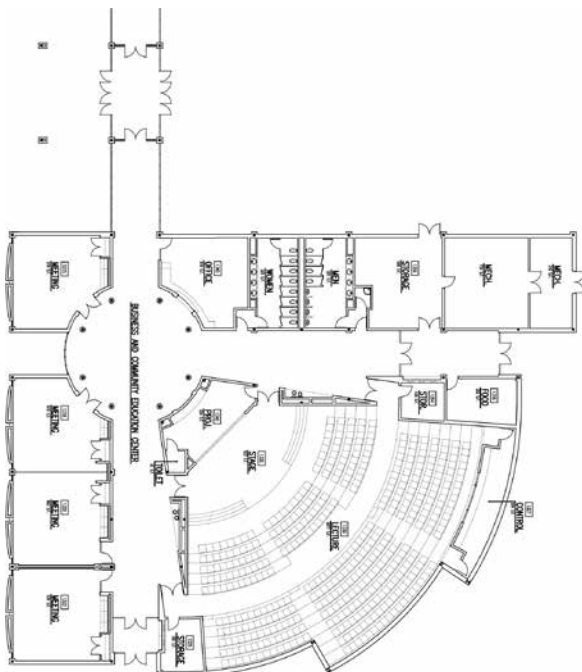
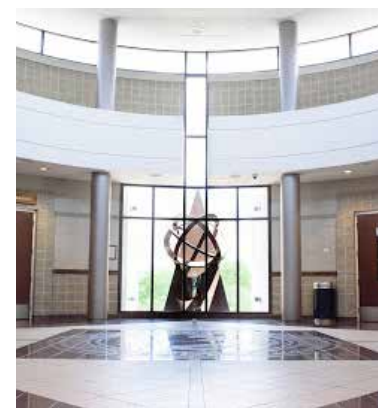
Meeting Rooms	5
Total Square Footage	2,785+
Largest Meeting Space	1,352

The Conference Center at Prairie State College offers room rentals with a variety of room layouts, flexible seating arrangements, beautiful rotunda and auditorium. Our meeting spaces include complimentary projection screens and audio visual equipment rentals. Ample free parking and complimentary Wi-Fi are available for your guests. Our professional staff assists you with your event planning. Visit prairiestate.edu/conferencecenter to learn more. Book your room to host a meeting, stage performance or celebration.

Prairie State College is located 22 miles from Midway Airport, 43 miles from O'Hare Airport and just over 3 miles to the nearest Metra Commuter Rail Station.

At A Glance

- Four meeting rooms with seating from 10 to 100
- Flexible seating arrangements
- 486-seat auditorium with an integrated sound system
- Courteous staff to assist you
- Ample, free parking and easy access from I-57 and I-80



Room	Dimensions	Sq. Ft.	Banquet	Classroom	Theatre	Reception	Ceiling
Barnes and Noble							
College Auditorium	-	-	-	-	486	-	-
Room 1315	25'x26'	650	30	30	50	32	10'
Room 1318	26'x26'	675	30	20	50	32	10'
Room 1320	26'x26'	675	40	30	60	32	10'
Room 1322	25'x26'	650	40	30	60	32	10'
Proven IT							
Room (1318 & 1320)	52'x26'	1,352	80	60	100	80	10'

Classrooms can be rented.



6601 West College Drive
Palos Heights, IL 60463

Trinity Christian College offers a picturesque setting on our beautifully wooded 60-acre campus with personal attention to large and small groups. Located just 30 minutes southwest of downtown Chicago, Trinity welcomes meetings, banquets and receptions all year long as well as conferences, family/class reunions and overnight accommodations during the summer. The Ozinga Chapel can host banquets, bridal/baby showers, receptions, group/church retreats, concerts/recitals and graduation ceremonies. Trinity offers excellent on campus catering as well as audio/visual services.

Meeting Rooms	34
Total Square Footage	39,950+
Largest Meeting Space	10,000

At A Glance

- Personalized attention and friendly staff
- Picturesque setting
- Excellent catering services
- On campus audio/visual services
- Variety of meeting facilities

Capacity Guide	
Facility	Occupancy
Classroom Building	
CL130	15
CL 201	18
CL 202	40
CL 203	25
CL 204	45
CL 205	30
CL 206	40
CL 211	30
CL 212	30
CL 213	35
CL 214	15
CL 215	52
DeVos Center	
DVC 106	24
DVC 136	44
DVC 138	40
DVC 136/138	84

Capacity Guide	
Facility	Occupancy
Groot Hall	
GR 010	48
GR 050	42
GR 110	16
Heritage Science Center	
HSC 014	94
Alumni Hall	
AH Classroom	70
VanderVelde Hall	
VV050	25



Room	Dimensions	Sq. Ft.	Banquet	Classroom	Theatre	Reception	Ceiling
Board Room	39'1"x19'10"	550	35	35	-	-	8'5"
Fireside Room	45'9"x24'3"	850	50	50	-	-	25'5" max 13'3" pitch
Marg Kallemeyn Theatre	51'x38'4"	1,350	-	-	150	-	20'2"
Mitchell Memorial Gymnasium	107'4"x101'8"	17,500	500	1,000	-	-	24'1"
Ozinga Chapel - Grand Lobby	75'6"x42'1"	3,500	184	200	-	184	30'1" max 16'6" pitch
Ozinga Chapel - Recital Hall	60'4"x33'4"	2,200	100	125	-	100	33'1" max 16'6" pitch
Ozinga Chapel - Auditorium	104'2"x261'	10,000	-	1,100	1,100	-	40'4" max
Classrooms			-	8-94	-	-	



20000 Western Avenue
Olympia Fields, IL 60461

Meeting Rooms	2
Total Square Footage	1,300
Largest Meeting Space	1,300

Consider Irons Oaks for your next retreat or special function. Irons Oaks facilities offer an ideal setting for baby showers, religious ceremonies, anniversaries, birthday parties or an office meeting; come see our beautiful, 1,300 sq. ft conference rooms. These rooms offer spacious accommodations for your special event along with a secluded, cozy, gracious atmosphere hosted by Irons Oaks' friendly staff. A sure delight!

Irons Oaks Environmental Learning Center provides the ultimate in experiential training programs coupled with a fun, safe environment that will take your business professionals to the next level of achievement.

Does your team need direction? At Irons Oaks, our Corporate Reach programs are customized to fit your corporation's specific needs. Corporate Reach training enhances professional skills with collaboration, communication, problem solving and accountability, introduces tools for enhancing interaction and provides guidance for action plan development to integrate team principles into daily operations, and much more! Our clients take back to their offices greater understanding and appreciation of individual skills and contributions and how their efforts impact group effectiveness. These skills provide the tools for groups and individuals to return to their organizations and create measurable improvements.

We offer experienced, top notched trainers who specialize in workshop facilitation, one-on-one consultations, off-site adventures and more. There is so much that we offer here at Irons Oaks. Your office staff will never be the same! While some of the training is physical in nature, everyone has the power to decide at what level he or she wishes to participate. Irons Oaks is located on a 38-acre wooded preserve just south of the Chicago metropolitan area, conveniently located off I-57 at the corner of Vollmer Road and Western Avenue in Olympia Fields, Illinois. Additional grounds and facilities available for larger engagements.

Irons Oaks is located 21 miles from Midway Airport, 42 miles from O'Hare Airport and just under two miles from the nearest Metra Commuter Rail station.

At A Glance

- Corporate and Non-profit Team Building
- Adventure Program - High Ropes & Climbing Wall
- Secluded and Relaxing Atmosphere for Retreats
- Friendly, Helpful and Positive Staff
- Personalized Attention to Work with Your Group Needs



Room	Dimensions	Sq. Ft.	Banquet	Classroom	Theatre	Reception	Ceiling
Conference Room	42'x27'	1,300	80	75-100	60	100	8.5'

MATTESON COMMUNITY CENTER



20642 Matteson Avenue
Matteson, IL 60443

area 5

Meeting Rooms	6
Total Square Footage	4,209
Largest Meeting Space	1,412

Make the Matteson Community Center the DESTINATION for your important events, business meetings, family functions and sporting events. The Matteson Community Center is 22 miles from Midway Airport, 44 miles from O'Hare Airport and 3 miles from the nearest Metra Commuter Rail station.

At A Glance

- 73,000 Square Foot State-of-the-Art Facility
- Multipurpose Room Rentals & Gymnasiums
- Full Service Juice Bar/Concession Stand
- WiFi Access
- Conveniently Located Near Interstate 57

Room	Dimensions	Sq. Ft.	Occupancy	Ceiling
Glass Room (Room 102)	26' x 38'	975	40	10'
Room 105	19' x 26'	540	20	10'
Room 107	20' x 23'	502	20	10'
Room 108	21' x 33'	693	50	10'
Room 110	21' x 32'	672	50	10'
Room 108/110 (combined)	21' x 65'	1,412	100	10'
Eagles Nest	25' x 33'	827	40	-

ORLAND PARK CIVIC CENTER

area 2

Orland Park Civic Center Authority 14750 South Ravinia Avenue
Orland Park, IL 60462

Meeting Rooms	3
Total Square Footage	6,650
Largest Meeting Space	3,885

The Orland Park Civic Center is handicapped accessible and surrounded by ample parking. With more than 10,000 square feet of space, the Civic Center is ready to host your next sales conference, training seminar, reunion, sporting event, trade show, convention, theatrical, cultural, civic, educational or commercial activity. It is also the ideal setting for private events such as weddings, showers and christenings. Whether business or social, our staff is dedicated to making your event a success. We will be happy to provide suggestions for caterers, entertainers and other resources available to make sure that all the particulars for your event are satisfied. The Center offers flexibility, with connecting, interchangeable rooms to meet your specific needs. The Orland Park Civic Center wishes to make your occasion a happy and memorable event. The Orland Park Civic Center is 14 miles from Midway Airport, 31 miles from O'Hare Airport and 1 mile from the nearest Metra Commuter Rail station.

At A Glance

- State of the Art Audio Visual
- Free Parking/Handicap Access
- WiFi
- Kitchen Facilities
- Liquor and Entertainment Permitted



Room	Dimensions	Sq. Ft.	Banquet	Classroom	Theatre	Reception	Ceiling
Exhibition Hall	37'x106'	3,885	250	200	450	450	9'
Grand Hall	13'x115'	2,400	-	-	-	50	20'
The Jane Barnes Annex	79'x35'	2,765	125	200	200	125	12'

Chicago Southland



Credit: David Lassen



Like us on Facebook.com/ChicagoSouthland

Follow us on Twitter.com/VisitSouthland

Follow us on Instagram.com/VisitSouthland

Watch us on YouTube.com/ChicagoSouthlandCVB

#ChicagoSouthland

enjoy
illinois

Chicago
Southland
Convention & Visitors Bureau
Just Beyond the City Limits

708-895-8200 FAX 708-895-8288
Meetings@VisitChicagoSouthland.com
MeetChicagoSouthland.com